



金順億科技有限公司

順億配管材料

● 產品型錄 ●



專業工廠製造 嚴格品質把關



● 公司簡介：

公司理念：品質·服務·效率

金順億科技有限公司創立之初為台灣國內外塑膠管配件、閥門銷售商，基於公司對品質的要求及產品保證於2006年起著手致力於研發及製造自有品牌，並於2006年全面量產及取得國家級檢驗中心產品檢驗認證。公司自今仍秉持著創立之初的理念嚴守把關本公司所生產之產品及提供國內外高品質的需求。

- 2005年 於台南市新市區公司創立
- 2006年 為擴大服務範圍，成立台中展業處
- 2006年 開發透明管配件成立工廠研發加工
- 2007年 為配合園區電子廠建廠，成立台南總會
- 2008年 成立新竹展業處，擴大北台灣服務範圍
- 2009年 新市總公司為擴大營運，遷至現所(200坪廠房)成立五金另件部
- 2010年 於新市擴建辦公室及廠房並成立外銷部門

● 公司產品介紹：

UPVC SCH80/40工業用管件/配件/閥件、CPVC SCH80/40工業管管件/配件/閥件、CLEAN PVC純水/化學用管件/配件/閥件、CLEAR PVC透明管件/配件/閥件、HT-PP工業用管件/配件/閥件、PVDF純水/化學用管件/配件/閥件、ABS空調/工業用管件/配件/閥件、PFA化學用管件/配件/閥件、工業用塑膠板/塑膠螺絲/塑膠焊條。

● 相關認證：

本公司之產品皆符合ISO 9002品質認證、NSF美國生飲協會認證、WRAS英國國家認證、CE歐盟認證、LPCB英國消防安全認證及國內各大電子廠許可材料供應商

● 規格：

ANSI 150 PSE
JIS-10K
DIN-PN10

BS
CNS
BSPT,BSPF,BSPS,NPT

品質 · 服務 · 效率



● Company Profile:

KINGSHUENYI was founded at the initial stage is a distributor of various plastic pipes, valves and fittings for domestic and foreign market. Based on the company's requirements for products quality and guarantee, we had dedicated to developing and manufacturing our own brand since 2006. Moreover, we started full production and also achieved national testing certification of product inspection center in 2006. Up to now, we still keep our initial concept for the strict control of production, and provide high-quality products for domestic and foreign demand.

KINGSHUENYI Company Milestone

Year 2005	KINGSHUENYI was established in Xinshi Village, Tainan County.
Year 2006	Expanding service range to Taichung, and set up a Taichung-Business Division.
	Established a factory for researching, developing and manufacturing Clear PVC Fittings.
	Becoming a manufacture of own brand. (OBM)
Year 2007	Set up Tainan Head Office for servicing Elec. Industries in Tainan Science Park
Year 2008	Set up Sales Dept. in Hsinchu and Taichung for expanding Northern Taiwan Service.
Year 2009	Due to expanding operation, Tainan Head Office moved to current location (200 ping warehouse) and also established the Hardware Parts Dept.
Year 2012	Plan to establish the Taiwan Headquarter (600 ping warehouse), and Hsinchu, Taichung and Tainan all have set up Sales Dept.

● Product Introduction:

UPVC SCH80 / SCH40 Industrial Pipes/Fittings/Valves
CPVC SCH80 / SCH40 Industrial Pipes/Fittings/Valves
CLEAN PVC Pure Water/Chemical Pipes/Fittings/Valves
CLEAR PVC Pipes/Fittings
HT-PP Industrial Pipes/Fittings/Valves
PVDF Pure Water/Chemical Pipes/Fittings/Valves
ABS HVAC/Industrial Pipes/Fittings/Valves
PFA Chemical Pipes/Fittings/Valves
Industrial Plastic Sheet/Plastic Screws/Plastic welding rod

● Certification:

Our products have granted ISO9002 quality assurance, Associate of the United States NSF certification, UK WRAS Certification, European CE certification, LPCB British fire safety certification and became an approved materials supplier for mainly domestic electronic plants.

品質 · 服務 · 效率

特性說明

- **耐腐蝕** 化學穩定性高，有極佳之耐候性，使用壽命長，不會對管內的水質污染，保持系統的安全及效率。
- **絕緣佳** 絕緣不導電，沒有漏電之慮，且沒有電腐蝕之慮，確保系統之壽命及安全。
- **耐壓高** 可以承受額定壓力之3~4倍，足以克服任何條件下的水錘作用，確保系統之品質及安全。
- **耐撞擊** 在低溫條件下，可以承受極大外力而不變形或損壞。
- **耐候佳** 經多年國內外使用實績證明，長期在戶外惡劣環境下，仍可維持極佳的系統穩定性。
- **韌性強** 不虞外力或內應力變化所造成之損害，如水錘、地震等。
- **內壁光滑** 阻力損失少，除了可降低泵浦揚程外，更不會有污物附著壁上減少流量，可確保系統之流量穩定，效率及壽命增長。
- **無公害** 化學穩定性高，沒有二次污染，維持系統內最佳之熱交換效率，又因為沒有電腐蝕效應，系統的壽命及可靠性增強。
- **保溫佳** 熱傳導係數約為GIP的1/300，即減少熱損失量為GIP的300倍，除可提高能源效率外，亦可減少保溫費用及減少結露的困擾，確保系統效率及不漏水的可靠性。
- **質輕** 重量僅約GIP的1/6，搬運及施工容易，確保施工時間準時完工，節省大量工資。
- **施工易** 管與接頭以冷膠接合，速度快且安全可靠，確保施工品質及壽命，接頭強度高，保證氣密不漏，避免完工後之漏水現象。
- **壽命長** 30年以上。

一般用途

酸鹼化學品輸送系統
純水輸送系統
海水輸送系統
飲用水輸送系統
灌溉輸送系統
污水輸送系統
環境工程一般管路系統
空調冰水 / 迴水系統

適用場所

電鍍廠、化工廠
電子廠、IC半導體廠
鋼鐵廠、核電廠
發電廠、造紙廠
食品廠、飲料廠
藥品廠、污水處理廠
醫院…

產品規格說明

UPVC管路系統以特級塑膠合成物製成，即一般人所熟知的不含可塑劑(Dop)之聚氯乙烯(PVC)。該合成物應符合ASTM D1784或CNS14442規定之12454(PVC 1120)等級要求。

管：管應符合或超過ASTM D1785對Sch-40與Sch-80的要求。

配件：配件應符合或超過ASTM D2464(Sch-80牙接)、ASTM D2467(Sch-80套接)或ASTMD2466(Sch-40套接)的要求。

清潔劑/溶劑黏膠：所有套接狀的接頭可採用清潔劑和溶劑黏膠接合，安全使用清潔劑和黏膠的標準做法應參考ASTM F402。

標記：所有管和配件應清楚標示廠商名稱或商標、生產日期、材料等級，適用ASTM標準，以及認證標幟。

嚴格品質及製造規範

ISO 9001	品保認證（獲得經濟部標準檢驗局BSMI、BVQI、LPCB等認可登錄）。
ASTM D1784	硬質聚氯乙烯(PVC)合成物標準規格說明。
ASTM D1785	聚氯乙烯塑膠管，Sch-40、Sch-80及Sch-120，標準規格說明。
ASTM D2464	螺紋聚氯乙烯(PVC)塑膠管配件，Sch-80，標準規格說明。
ASTM D2466	套接式聚氯乙烯(PVC)塑膠管配件，Sch-40，標準規格說明。
ASTM D2467	套接式聚氯乙烯(PVC)塑膠管配件，Sch-80，標準規格說明。
ASTM F402	安全使用溶劑黏膠與清潔劑接合熱塑性管與配件之標準應用方法。
CNS12221	衛生署食品器具、容器、包裝衛生標準測試方法。
CNS14442	硬質聚氯乙烯混合料及氯化聚氯乙烯混合料標準。

燃燒特性

材質	特性	可燃性	移去火燄後是否繼續燃燒	火燄顏色	燃燒後狀態
聚氯乙烯 PVC Sch80/40		難燃	熄滅	黃色，下端綠色	軟化，冷卻後硬化、脆化
金屬 SUS、CIP、GIP...		不燃	—	—	—
聚丙烯 PP		可燃	不熄滅	黃色，(藍色火燄)	快速完全燒掉
ABS		可燃	不熄滅	黃色黑煙	熔融落下
高密度聚乙烯 HDPE		可燃	不熄滅	先端黃色下端青色	熔融落下

常用管材特性比較

管名稱	SCH-80/40 UPVC 管	PP 管	HDPE 管	ABS 管	PVC 內襯鋼管	GIP 鍍鋅鋼管	不鏽鋼管
特點							
接頭	溶劑膠接	熱焊、電焊及機械式	熱焊、電焊及機械式、套焊鋼接頭	溶劑膠接	接合困難	車牙或焊接	壓接容易車牙不易
使用年限	長	中	中	中	中等	短	中等
內部特性	光滑，摩擦係數小	較粗	較粗	光滑，摩擦係數小	<small>PVC 與鋼管熱膨脹係數不同長久於溫度變化大範圍之場合使用易使兩者剝離</small>	不良，表面不光滑，摩擦係數大	鉋光等級效果較佳
耐化學	耐強酸強鹼	耐酸鹼	耐酸鹼	耐弱酸弱鹼	耐鹼不耐酸	差	中等
保溫	佳	中	佳	中等	中等	差	差
耐溫	0°C ~ +65°C	-20°C ~ +85°C	-20°C ~ +85°C	-20°C ~ +70°C	-5°C ~ +55°C	-40°C ~ +200°C	40°C ~ +200°C <small>包括頭的 SEAL 不耐高溫</small>
耐震	中等	中	佳	中等	中等	中等	中
耐衝擊性	耐撞擊	耐撞擊	耐撞擊	耐撞擊	耐撞擊	耐撞擊	依管壁厚度定
耐壓性 (內壓)	耐工作壓力高	中	中	中	耐壓高	耐壓高	同上
耐紫外線 耐候性	佳	差	差	可	差	佳	佳
維護	維護容易	維護困難	維護困難	易	維護不易	差	易
材質	UPVC	PP	HDPE	丙烯晴-丁二烯-苯乙烯	PVC + 鍍鋅鋼管	鋼管外加熱浸鍍鋅	不銹鋼
施工	容易	機械式接合困難	套焊機械式接合困難	易	中等	中等	壓接容易絞牙中等氣焊不易
成本	中等	中上等	中上等	中等	高	中等	高
添加劑 及安定劑	有機錫	碳黑或石墨	碳黑或石墨	鈣鋅系安定劑	有機錫	無	無
毒性	無，可用於飲用水管	無，可用於飲用水管	無，可用於飲用水管	符合 CNS 自來水用管標準	不建議輸送飲用水	易腐蝕生銹，不適用飲用水管	無，可用於飲用水管
比重	1.4	0.91	0.95	1.0	6 以上	6 以上	6 以上

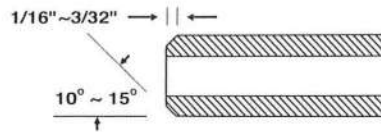
施工安裝方式簡介

1. 切割

管可以用輪形塑膠管切割器，電鋸，或齒形完好的塑膠管切割用鋸子等簡單工具輕鬆切割。在用鋸子切割時儘量確保管被切成垂直平整，管切得越方，黏合的面積就越大。

2. 去毛邊

利用去角工具或銼刀將管內外的毛邊和銹屑清除乾淨。並建議施以適當導角（參如下圖）以使管口易於進入套節，並減少抹去配件上溶劑黏膠的機會。



3. 配件準備

用乾淨的乾布擦掉管及配件接合面上的灰塵和水分。並檢查管與配件的接合情形。管應能輕易進入配件套節1/3到3/4深。

4.5. 塗抹清潔劑

管與配件套接時膠合的結合面需先使用清潔劑來滲透軟化，以增進溶劑黏膠之溶接效果，使用大約管直徑一半大小的塗抹工具或毛刷（建議勿用破布）將清潔劑均勻塗在管末端接合外面和配件受口內面，大尺寸管件接合或必要時宜增加塗抹次數及量，以確保表面的軟化效果。

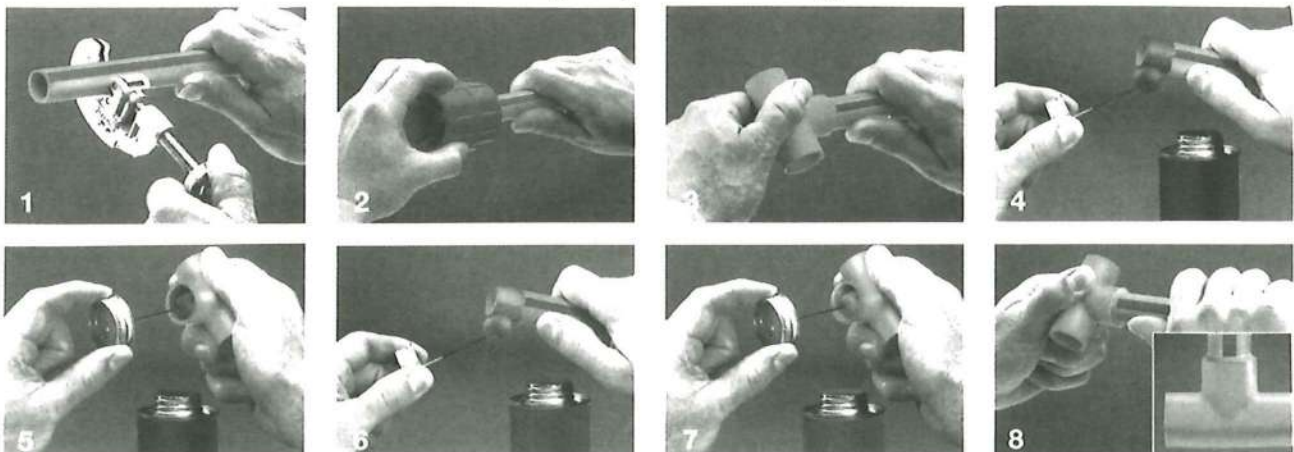
6.7. 塗抹溶劑黏膠

溶劑黏膠必須在管表面清潔劑作用完畢後塗上。接合表面必須被浸透而且軟化。黏膠應以管直徑一半大小的天然鬃刷塗上。管末端外面應塗厚層黏膠，配件套接內面應塗中等厚度黏膠。大於2英寸的管應在其末端塗上第二層黏膠或相對增加塗抹次數。

8. 組合

塗完黏膠後，應立刻將管插入配件套接並旋轉至少1/4圈，管必須和配件套接底部接觸。組合應維持10到15秒固定以確保初步接合（6"以上管件之接合，需要二人合作緊握接合處約1~3分鐘）。管和配件接合點的周圍膠水溢出應很明顯。如果套接口周圍的溢出黏膠不連續，表示所塗抹的黏膠不足。果真如此，建議應將配件丟棄，重新組合接頭。過量溢出部份的黏膠可利用破布擦去。

Joining Pipe and Fittings



安置與固化時間

管路在接合後宜在沒有任何壓力下至少安置一段時間，即可小心進行下一步裝卸組合，以確保最佳接合效果。安裝步驟完成，並參考下列之固化時間要求後，該系統即可進行壓力測試。在進行壓力測試時，請將管路系統內注滿水，並將空氣排出。**請勿使用空氣或壓縮氣體進行壓力測試。**溶劑黏膠的安置與固化時間主要受管尺寸、溫度、相對濕度及適合緊度的影響。環境越乾燥，管越小，溫度越高，緊密度越大，乾燥的時間就越快。

在極端溫度條件下應特別注意系統的組合。當溫度低於華氏40度(攝氏4度)時，應給予額外的安置與固化時間。當溫度高於華氏100度(攝氏38度)時，裝配者應確定在接合前要接合的兩面上之黏膠仍是濕的。

* 安置建議時間

周邊溫度	1 1/4" 以下	1 1/2" ~ 3"	4" ~ 8"	10" ~ 12"
15°C 以上	15分鐘	30分鐘	1小時	2小時
4°C ~ 15°C	1小時	2小時	4小時	8小時
低於4°C	3小時	6小時	12小時	24小時

壓力測試前建議之固化時間 (試壓在 180PSI 以下；10"以上試壓在100PSI以下)

周邊溫度	1 1/4" 以下	1 1/2" ~ 3"	4" ~ 8"	10" ~ 12"
15°C 以上	1小時	2小時	6小時	24小時
4°C ~ 15°C	2小時	4小時	12小時	40小時
低於4°C	8小時	16小時	48小時	8天

壓力測試前建議之固化時間 (試壓在 180PSI 以上)

周邊溫度	1 1/4" 以下	1 1/2" ~ 3"	4" ~ 8"
15°C ~ 43°C	6小時	6小時	24小時
4°C ~ 15°C	12小時	24小時	48小時
低於4°C	48小時	96小時	8天

* 註：相對溼度如超過60%以上，固化時間建議應適度延長約50%之時間。

法蘭片接合施工

法蘭(Flange)可用來提供不同規格、材質管路系統間銜接，或管路系統暫時（維修）的拆卸，亦或在無法進行溶劑黏膠接合時使用。

法蘭接頭配合彈性墊片在結合面間形成一個密合面。所選的墊片必須是整面的，墊片的質料必須能抵抗化學環境。很多墊片製造商有供應這方面的資料。如果管路系統是要做為輸送飲用水之用，墊片也必須是可適合飲用水的材質。

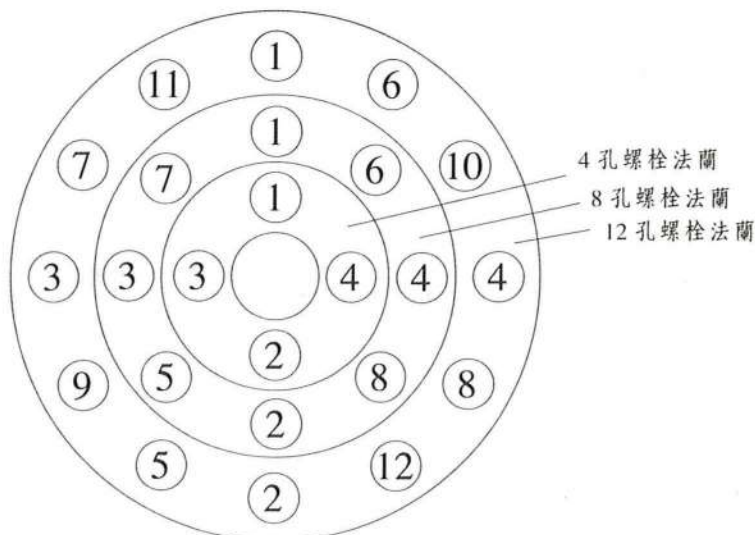
接合法蘭片時應小心對準並將螺栓嵌入配合孔內。並在每一個螺帽和螺栓頭下方放置平墊圈。每一個螺栓應加下圖交錯順序中逐步鎖緊。最後鎖緊螺栓應使用扭力扳手。螺栓應參考下表之扭矩以先前相同交錯順序鎖緊。

法蘭承受壓力基本上在150 psi（華氏73度）。在較高溫度操作系統時，法蘭承受壓力應依照配合管路系統的壓力遞減係數來減低。

建議螺栓扭力

管標稱尺寸	螺栓洞編號	螺栓直徑 (吋)	建議扭矩 (ft-lbs)
1/2"- 1 1/2"	4	1/2	10 - 15
2"-3"	4	5/8	20 - 30
4"	8	5/8	20 - 30
6"	8	3/4	33 - 50
8"	8	3/4	33 - 50
10"	12	7/8	53 - 75
12"	12	1	80 - 110

法蘭片用螺栓鎖緊順序模式



- Specification: JIS 10K / ANSI 150 LBS / DIN PN10 @73.4°F (23°C), Gasket type

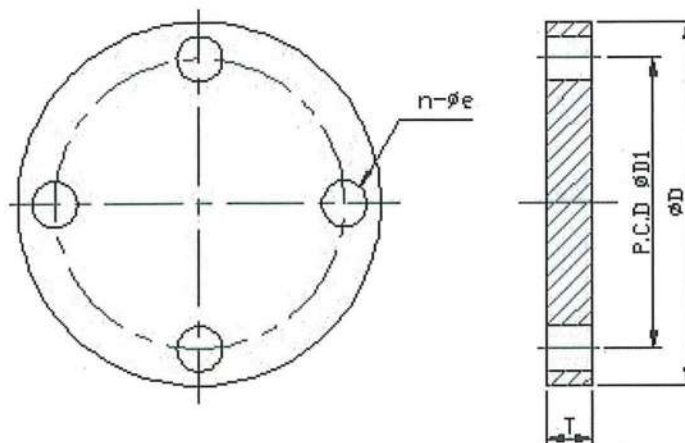
- 規格：JIS 10K / ANSI 150 LBS / DIN PN10 @73.4°F (23°C), 適用墊片接合型式



Type 品號	Size 尺寸	Standard 規格	Material 材質	End type 接口
VP-250	1/2"~12"	ANSI, JIS, DIN	PVC	Flanged
VP-251	1/2"~12"	ANSI, JIS, DIN	CPVC	Flanged
VP-260	1/2"~12"	ANSI, JIS, DIN	PVC	Socket, Thresded / Flanged
VP-261	1/2"~12"	ANSI, JIS, DIN	CPVC	Socket, Thresded / Flanged
VP-270	2"~16"	ANSI	PVC	Socket, Thresded / Flanged
VP-271	2"~16"	ANSI	CPVC	Socket, Thresded / Flanged

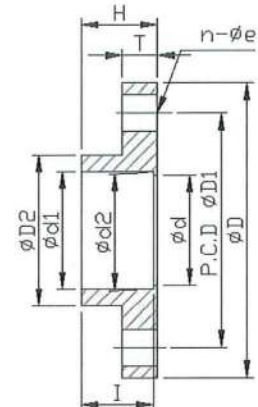
BLIND FLANGE

Nom.	SIZE	1/2"	3/4"	1"	1-1/4"	1-1/2"	2"	2-1/2"	3"	4"	5"	6"	8"	10"	12"
		(15mm)	(20mm)	(25mm)	(32mm)	(40mm)	(50mm)	(65mm)	(80mm)	(100mm)	(125mm)	(150mm)	(200mm)	(250mm)	(300mm)
ANSI	D	89	98	108	117	127	152	178	191	229	254	284	343	406	481
	D1	61	70	79	89	98	121	140	152	191	216	241	298	362	432
	T	12	13	14	16	17.5	19	22	24	24	28.5	26	28	34	34
	n-φe	4-16	4-16	4-16	4-16	4-16	4-19	4-19	4-19	8-19	8-22	8-22	8-22	12-25	12-25
JIS	D	95	100	125	135	140	155	175	185	210	250	280	330	400	445
	D1	70	75	90	100	105	120	140	150	175	210	240	290	355	400
	T	14	15	15	16	16	20	22	22	22	24	26	28	30	30
	n-φe	4-15	4-15	4-19	4-19	4-19	4-19	4-19	8-19	8-19	8-23	8-23	12-23	12-25	16-25



ANSI 150 PSI FLANGE (one piece)

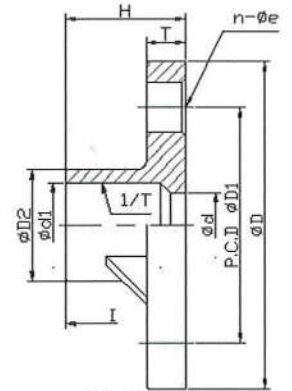
SIZE Nom.	1/2" (15mm)	3/4" (20mm)	1" (25mm)	1-1/4" (32mm)	1-1/2" (40mm)	2" (50mm)	2-1/2" (65mm)	3" (80mm)	4" (100mm)	5" (125mm)
D	89	98	108	117	127	152	178	191	229	254
D1	61	70	79	89	98	121	140	152	191	216
D2	33	40	48	57	65	78	92	109	139	167
d	15	25	31	40	46	57.5	70	78	111.5	136
d1	21.54	26.87	33.65	42.42	48.56	60.63	73.38	89.31	114.76	141.81
d2	21.23	26.57	33.27	42.04	48.11	60.17	72.85	88.70	114.07	141
H	25	29	31.7	35	38	41.3	47.6	50.8	61	82.5
T	11	12	14	16	17.5	19	22	24	24	28.5
I	22.22	25.4	28.58	31.75	34.93	38.1	44.45	47.63	57.15	66.7
n-φe	4-16	4-16	4-16	4-16	4-16	4-19	4-19	4-19	8-19	8-22



ANSI 150PSI FLANGE(ONE PIECE)

JIS 10K

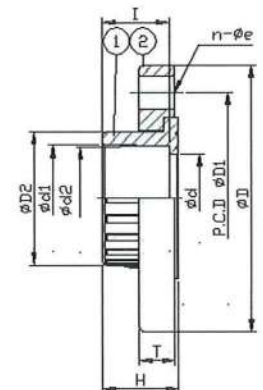
SIZE Nom.	3/8" (10mm)	1/2" (15mm)	3/4" (20mm)	1" (25mm)	1-1/4" (32mm)	1-1/2" (40mm)	2" (50mm)	2-1/2" (65mm)	3" (80mm)	4" (100mm)	5" (125mm)	6" (150mm)	8" (200mm)	10" (250mm)	12" (300mm)
D	90	95	100	125	135	140	155	175	185	210	250	280	330	400	445
D1	65	70	75	90	100	105	120	140	150	175	210	240	290	355	400
D2	26	31	35	42.5	48.5	61	73	90	105	132	158	186	238	289	341
d	15	18	22	25	30	41	52	67	78	100	125	146	196	247	298
d1	18.4	22.4	26.45	32.55	38.6	48.70	60.80	76.60	89.60	114.7	140.8	166.0	217.5	267.7	318.7
H	30	35	40	46	50.5	61.5	71	70	73	93	114	142	161	167	167
T	14	14	15	15	16	16	20	22	22	22	24	26	28	30	30
I	26	30	35	40	44	55	63	61	64	84	104	132	145	155	155
n-φe	4-15	4-15	4-15	4-19	4-19	4-19	4-19	4-19	8-19	8-19	8-23	8-23	12-23	12-25	16-25
1/T	1/30	1/34	1/34	1/34	1/34	1/37	1/37	1/48	1/49	1/56	1/58	1/63	1/50	1/55	1/55



JIS 10K

ANSI 150 PSI FLANGE (Van Stone)

SIZE Nom.	2" (50mm)	2-1/2" (65mm)	3" (80mm)	4" (100mm)	6" (150mm)	8" (200mm)	10" (250mm)	12" (300mm)	14" (350mm)	16" (400mm)	18" (450mm)	20" (500mm)	24" (600mm)
D	152	178	192	229	284	343	406	481	533	600	635	699	813
D1	121	140	152	191	241	298	362	432	476	540	578	635	749
D2	76	92	108	133	191	238	296	346	395	452	507	564	675
d	51	68	77	102	156	204	256	307	340	384	430	481	590
d1	60.63	73.38	89.31	114.76	168.83	219.84	273.81	324.61	356.49	407.54	458.6	509.65	611.52
d2	60.17	72.85	88.7	114.07	168	218.7	272.67	323.47	355.22	405.89	456.69	507.49	608.84
H	43	49	54	64	85	118	150	191	195	220	280	310	346
T	20	24	26	28	32	36	42	42	50.8	60	62	63	72
I	38.1	44.45	47.63	57.15	76.2	102	123	165	169	204	254	280	305
n-φe	4-19	4-19	4-19	8-19	8-22	8-22	12-25	12-25	12-29	16-29	16-32	20-32	20-35



P.S: Socket diameters conform to ASTM D2467 / F439 Sch80 standard.

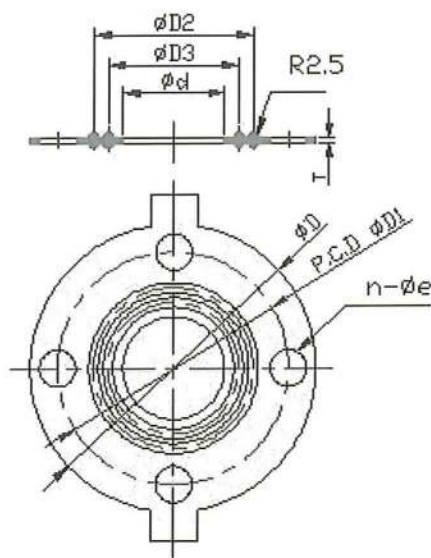
橡膠墊片 VP-289系列

Rubber Gaskets

● Specification: EPDM, NBR, FPM

● 材質：EPDM, NBR, FPM

Type 品號	Size 尺寸	Standard 規格	Material 材質
VP-289	1/2"~12"	ANSI, JIS, DIN	EPDM, NBR, FPM



JIS 10K

SIZE Nom.	1/2" (15mm)	3/4" (20mm)	1" (25mm)	1-1/4" (32mm)	1-1/2" (40mm)	2" (50mm)	2-1/2" (65mm)	3" (80mm)	4" (100mm)	5" (125mm)	6" (150mm)	8" (200mm)	10" (250mm)	12" (300mm)	14" (350mm)	16" (400mm)
D	93	98	123	133	138	153	173	183	208	248	278	328	398	443	485	560
D1	70	75	90	100	105	120	140	150	175	210	240	290	355	400	445	510
D2	41	47	53	65	69	83	101	112	138	166	190	247	306	352	405	482
D3	26	32	38	50	54	68	86	98	120	145	168	216	270	324	380	452
d	18	22	30	37	43	54	69	80	102	127	150	198	249	300	350	400
n-øe	4-15	4-15	4-19	4-19	4-19	4-19	4-19	8-19	8-19	8-23	8-23	12-23	12-25	16-25	16-25	16-27
T	3	3	3	3	3	3	3	3	3	3	3	3	3	3	3	3

ANSI 150 PSI

SIZE Nom.	1/2" (15mm)	3/4" (20mm)	1" (25mm)	1-1/4" (32mm)	1-1/2" (40mm)	2" (50mm)	2-1/2" (65mm)	3" (80mm)	4" (100mm)	5" (125mm)	6" (150mm)	8" (200mm)	10" (250mm)	12" (300mm)	14" (350mm)	16" (400mm)	18" (450mm)	20" (500mm)	24" (600mm)
D	86.36	96.52	106.68	114.30	124.40	149.86	175.20	187.96	226.06	251.46	276.86	340.36	403.86	480.06	530	595	630	692	800
D1	61	70	79	89	98	121	140	152	191	216	241	298	362	432	476	540	578	635	749
D2	40.64	48.26	53.34	66.04	68.55	83.82	101.60	111.76	137.16	165.10	190.50	246.38	307.34	356.06	405	482	510	566	674
D3	25.40	33.02	38.10	50.80	53.34	68.58	86.36	99.06	119.38	144.78	167.64	215.90	269.24	325.20	380	452	472	535	644
d	17.78	22.86	30.48	38.10	43.18	53.34	68.58	81.28	101.60	127.00	148.86	198.12	248.92	299.72	350	400	450	500	600
n-øe	4-16	4-16	4-16	4-16	4-16	4-19	4-19	4-19	8-19	8-22	8-22	8-22	12-25	12-25	12-29	16-29	16-32	20-32	20-35
T	3	3	3	3	3	3	3	3	3	3	3	3	3	3	3	3	5	5	5

DIN PN 10

SIZE Nom.	1/2" (15mm)	3/4" (20mm)	1" (25mm)	1-1/4" (32mm)	1-1/2" (40mm)	2" (50mm)	2-1/2" (65mm)	3" (80mm)	4" (100mm)	5" (125mm)	6" (150mm)	8" (200mm)	10" (250mm)	12" (300mm)
D	93	103	113	133	148	163	183	198	218	248	283	338	393	443
D1	65	75	85	100	110	125	145	160	180	210	240	295	350	400
D2	41	47	53	65	69	83	101	112	138	166	190	247	306	352
D3	26	32	38	50	54	68	86	98	120	145	168	216	270	324
d	18	22	30	37	43	54	69	80	102	127	150	198	249	300
n-øe	4-14	4-14	4-14	4-18	4-18	4-18	4-18	8-18	8-18	8-18	8-22	8-22	12-22	12-22
T	3	3	3	3	3	3	3	3	3	3	3	3	3	3

Unions 由令 · VP-240系列



金順億科技有限公司

- Suitable for any kind of piping system and easy to be installed.
- 拆裝容易可適用於各種規格之管路



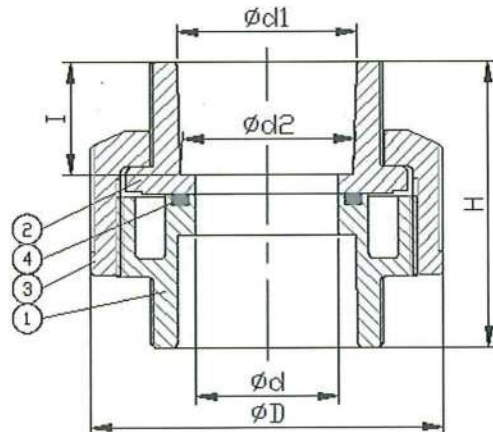
Type 品號	Size 尺寸	Standard 規格	Material 材質	O-RING O-環	End type 接口
VP-240	3/8"~4"	ANSI, JIS, DIN, BS	PVC	EPDM, FPM	Socket, Threaded
VP-241	3/8"~4"	ANSI, JIS, DIN, BS	CPVC	EPDM, FPM	Socket, Threaded
VP-243	3/8"~4"	ANSI, JIS, DIN, BS	PVDF	EPDM, FPM	Socket, Threaded
VP-244	3/8"~4"	ANSI, JIS, DIN, BS	PP	EPDM, FPM	Socket, Threaded

Nom.	SIZE	3/8"	1/2"	3/4"	1"	1-1/4"	1-1/2"	2"	2-1/2"	3"	4"
		(10mm)	(15mm)	(20mm)	(25mm)	(32mm)	(40mm)	(50mm)	(65mm)	(80mm)	(100mm)
JIS	d1	18.4	22.4	26.45	32.55	38.6	48.7	60.8	76.6	89.6	114.7
	d2	17.68	21.67	25.70	31.71	37.67	47.76	59.77	75.87	88.83	113.2
	l	19.05	22.2	25.4	28.6	31.8	34.9	38.1	44.45	47.63	69
ANSI	d1	17.45	21.54	26.87	33.65	42.42	48.56	60.63	73.38	89.31	114.8
	d2	17.04	21.23	26.57	33.27	42.04	48.11	60.17	72.85	88.7	114.1
	l SCH80	19.05	22.22	25.4	28.58	31.75	34.93	38.1	44.45	47.63	57.15
DIN	d1	16.3	20.3	25.3	32.3	40.3	50.3	63.3	75.3	90.3	110.4
	d2	15.9	19.9	24.9	31.9	39.9	49.9	62.9	74.9	89.9	109.9
	l	14	16	19	22	26	31	38	44	51	61
BS	d1	17.3	21.5	26.9	33.7	42.4	48.4	60.5	75.5	89.1	114.5
	d2	17.1	21.3	26.7	33.5	42.2	48.2	60.3	75	88.8	114.1
	l	14.5	16.5	19.5	22.5	27	30	36	44.45	47.63	57.15
thd./in.	NPT	18	14	14	11.5	11.5	11.5	11.5	8	8	8
	BSPT	19	14	14	11	11	11	11	11	11	11
D		38	46.5	55	66	82	98	120	140	163	225
d		12	13.5	16.5	22	30	38	48	63	75	100
H		48	56	64	72	87	90	98	114	127	162

NO.	PART	MATERIAL	QTY
1	BODY	UPVC, CPVC, PP, PVDF	1
2	END CONNECTOR	UPVC, CPVC, PP, PVDF	1
3	UNION NUT	UPVC, CPVC, PP, PVDF	1
4	O-RING	EPDM, FPM	1

CTS DIM.

Nom.	SIZE	1/2"	3/4"	1"	1-1/4"	1-1/2"
		(15mm)	(20mm)	(25mm)	(32mm)	(40mm)
d1		16.08	22.45	28.83	35.20	41.66
d2		15.72	22.10	28.47	34.85	41.20
l		19.50	20.70	26.20	28.80	26.80
D		38	46.5	55	66	82
d		12.5	18.5	24.5	29	35
H		48	56	64	72	87



雙邊由令球閥 VP-640系列 Double Union Ball Valve

- pressure rating:
150 PSI @73.4°F (23°C)
- Full port design
- Adjustable seat tightness
- Easy to disassemble by handle
- Less on-line down time for replacement / maintenance
- Actuator could be installed with inserted nut
- Standard Product is without nut

- 工作壓力：150 PSI @73.4°F (23°C)
- 標準流量設計
- 雙由令設計可同時當由令及閥門使用
- 墊座鬆緊可做適度調整
- 不須使用特殊工具即可快速裝配
- 可埋入銅柱加裝自重控制器
- 標準品未埋入銅柱



Type 型號	Size 尺寸	Standard 規格	Material 材質	Seat 墊座	O-ring 墊座	End type 接口
VP-640	1/2"~4"	ANSI, JIS, DIN, BS	PVC	PTFE	EPDM, FPM	Socket, Threaded, Flanged
VP-641	1/2"~4"	ANSI, JIS, DIN, BS	CPVC	PTFE	EPDM, FPM	Socket, Threaded, Flanged
VP-643	1/2"~4"	ANSI, JIS, DIN, BS	PVDF	PTFE	EPDM, FPM	Socket, Threaded, Flanged
VP-644	1/2"~4"	ANSI, JIS, DIN, BS	PP	PTFE	EPDM, FPM	Socket, Threaded, Flanged
VP-645	1/2"~4"	ANSI, JIS, DIN, BS	ABS	PTFE	EPDM, FPM	Socket, Threaded, Flanged

● There is no flanged end for BS

Nom.	SIZE	1/2"	3/4"	1"	1-1/4"	1-1/2"	2"	2-1/2"	3"	4"
		(15mm)	(20mm)	(25mm)	(32mm)	(40mm)	(50mm)	(65mm)	(80mm)	(100mm)
JIS	d1	22.30	26.30	32.33	38.43	48.46	60.56	76.60	89.6	114.7
	d2	21.70	25.70	31.67	37.57	47.54	59.44	75.87	88.83	113.98
	I	22.22	25.4	28.6	31.8	34.9	38.1	44.45	51	61
ANSI	d1	21.54	26.87	33.65	42.42	48.56	60.63	73.38	89.31	114.76
	d2	21.23	26.57	33.27	42.04	48.11	60.17	72.85	88.7	114.07
	I	22.22	25.40	28.58	31.75	34.93	38.10	44.45	51	61
DIN	d1	20.3	25.3	32.3	40.3	50.3	63.3	75.3	90.3	110.4
	d2	19.9	24.9	31.9	39.9	49.9	62.9	74.9	89.9	109.9
	I	16	19	22	26	31	38	44	51	61
BS	d1	21.5	26.9	33.7	42.4	48.4	60.5	75.5	89.1	114.5
	d2	21.3	26.7	33.5	42.2	48.2	60.3	75.0	88.8	114.1
	I	16.5	19.5	22.5	27	30	36	44.45	51	61
thd./in	PT	14	14	11	11	11	11	11	11	11
	NPT	14	14	11.5	11.5	11.5	11.5	8	8	8
D		46.5	55	66	82	98	120	140	163	225
D1		31	37	45	54	65	79	92	108	146
d		13	18	23	30	38	48	61	69	99
L		114	135	149	168	175	208	275	304	332
L1		60	73	79	88	95	114	138	158	176
L2		78	92	100	110	121	147	180	224	278
H1		47	57	66	74	87	106	116	130	178
H2		21	26	33	39	41	53	-	-	-
F		30	33	40	47	52	70	-	-	-
M		M5	M6	M6	M8	M8	M8	-	-	-
S		7	8	11	11	11	15	-	-	-

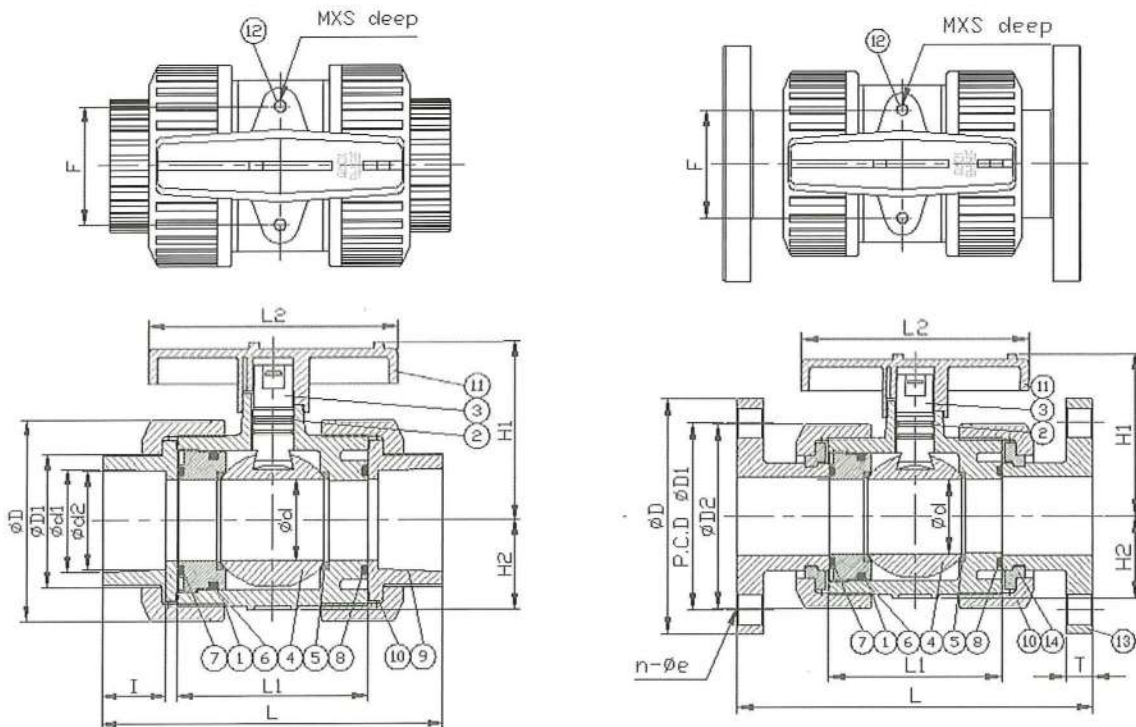
NO.	PART	MATERIAL	Q'TY
1	BODY	UPVC, CPVC, PP, PVDF, ABS	1
2	STEM O-RING	EPDM, FPM	2
3	STEM	UPVC, CPVC, PP, PVDF, ABS	1
4	BALL	UPVC, CPVC, PP, PVDF, ABS	1
5	SEAT SEAL	PTFE	2
6	CARRIER O-RING	EPDM, FPM	1
7	SEAL CARRIER	UPVC, CPVC, PP, PVDF, ABS	1
8	UNION O-RING	EPDM, FPM	2
9	END CONNECTOR	UPVC, CPVC, PP, PVDF, ABS	2
10	UNION NUT	UPVC, CPVC, PP, PVDF, ABS	2
11	HANDLE	ABS, PP+GF	1
12	INSERTED NUT	C3602	2.4

雙邊由令球閥 VP-640系列

Double Union Ball Valve

Nom.	SIZE	1/2" (15mm)	3/4" (20mm)	1" (25mm)	1-1/4" (32mm)	1-1/2" (40mm)	2" (50mm)	2-1/2" (65mm)	3" (80mm)	4" (100mm)
JIS	D	95	100	125	135	140	155	175	185	210
	D1	70	75	90	100	105	120	140	150	175
	L	143	172	187	190	212	234	259	304	372
	n-φe	4-15	4-15	4-19	4-19	4-19	4-19	4-19	8-19	8-19
	T	13	15	15	16	16	16.5	18	19	19
ANSI	D	89	98	108	117	127	152	178	191	229
	D1	61	70	79	89	99	121	140	152	191
	L	143	172	187	190	212	234	259	304	372
	n-φe	4-16	4-16	4-16	4-16	4-16	4-19	4-19	4-19	8-19
	T	13	15	15	16	17	17	18	19	20
DIN	D	95	105	115	140	150	165	185	200	220
	D1	65	75	85	100	110	125	145	160	180
	L	130	150	160	180	200	230	290	310	350
	n-φe	4-14	4-14	4-14	4-18	4-18	4-18	4-18	8-18	8-18
	T	18.5	20	20	20	20	22	22.5	22.5	24
D2	46.5	55	66	82	98	120	140	163	225	
d	13	18	23	30	38	48	61	69	99	
L1	60	73	79	88	95	114	138	158	176	
L2	78	92	100	110	121	147	180	224	278	
H1	47	57	66	74	87	106	116	130	178	
H2	21	26	33	39	41	53	-	-	-	
F	30	33	40	47	52	70	-	-	-	
M	M5	M6	M6	M8	M8	M8	-	-	-	
S	7	8	11	11	11	15	-	-	-	

NO.	PART	MATERIAL	QTY
1	BODY	UPVC, CPVC, PP, PVDF, ABS	1
2	STEM O-RING	EPDM, FPM	2
3	STEM	UPVC, CPVC, PP, PVDF, ABS	1
4	BALL	UPVC, CPVC, PP, PVDF, ABS	1
5	SEAT SEAL	PTFE	2
6	CARRIER O-RING	EPDM, FPM	1
7	SEAL CARRIER	UPVC, CPVC, PP, PVDF, ABS	1
8	UNION O-RING	EPDM, FPM	2
10	UNION NUT	UPVC, CPVC, PP, PVDF, ABS	2
11	HANDLE	ABS, PP+GF	1
12	INSERTED NUT	C3602	2.4
13	FLANGE	UPVC, CPVC, PP, PVDF, ABS	2
14	SET RING	UPVC, CPVC, PP, PVDF, ABS	2



單由令球型(終端)逆止閥 VP 460 470系列. Ball Check (Foot) Valve



金順億科技有限公司

- Pressure rating: 1/2"~2-1/2" 150 PSI,
3"~4" 100 PSI
- Minimum flow pressure: 2~4 PSI
- Vertically installed, the arrow
should be upward.
- Ball sealing design to be able to
seal hermetically.
- 工作壓力：1/2"~2-1/2" 150 PSI,
3"~4" 100 PSI
- 最低開啓壓力：2~4 PSI
- 依流向箭頭指示垂直安裝
- 球體逆止設計，密閉性佳



Type 型號	Size 尺寸	Standard 規格	Material 材質	Seal 止漏墊	End type 接口
VP-460	1/2"~4"	ANSI, JIS, DIN	PVC	EPDM, FPM, NBR	Socket, Threaded
VP-461	1/2"~4"	ANSI, JIS, DIN	CPVC	EPDM, FPM, NBR	Socket, Threaded
VP-463	1/2"~4"	ANSI, JIS, DIN	PVDF	EPDM, FPM, NBR	Socket, Threaded
VP-464	1/2"~4"	ANSI, JIS, DIN	PP	EPDM, FPM, NBR	Socket, Threaded
VP-470	1/2"~4"	ANSI, JIS, DIN	PVC	EPDM, FPM, NBR	Socket, Threaded

P.S: 零件P04亦可為圓形球，可參VP-440

Nom.		SIZE	1/2" (15mm)	3/4" (20mm)	1" (25mm)	1-1/4" (32mm)	1-1/2" (40mm)	2" (50mm)	2-1/2" (65mm)	3" (80mm)	4" (100mm)
JIS	d1		22.30	26.30	32.33	38.6	48.46	60.56	76.60	89.6	114.7
	d2		21.70	25.70	31.67	37.67	47.54	59.44	75.87	88.83	113.98
	I		22.22	25.4	28.6	31.75	34.9	38.1	61	63	69
ANSI	d1		21.54	26.87	33.65	42.42	48.56	60.63	73.38	89.31	114.76
	d2		21.23	26.57	33.27	42.04	48.11	60.17	72.85	88.7	114.07
	I		22.22	25.40	28.58	31.75	34.93	38.10	44.45	47.63	57.15
DIN	d1		20.3	25.3	32.3	40.3	50.3	63.3	75.3	90.3	110.4
	d2		19.9	24.9	31.9	39.9	49.9	62.9	74.9	89.9	109.9
	I		16	19	22	26	31	38	44	51	61
thd./in.	NPT		14	14	11.5	11.5	11.5	11.5	8	8	8
	BSPT		14	14	11	11	11	11	11	11	11
	D		50	62	72	97	97	107	163	163	225
	d		13	20	25	36	40	50	70	77	102
	H		93	109	122	155	155	178	262	262	321

Nom.		SIZE	1/2" (15mm)	3/4" (20mm)	1" (25mm)	1-1/4" (32mm)	1-1/2" (40mm)	2" (50mm)	2-1/2" (65mm)	3" (80mm)	4" (100mm)
JIS	D		95.5	100	124.5	134.5	140.5	155	175	184.5	209.5
	D1		70	75	90	100	105	120	140	150	175
	n-φe		4-15	4-15	4-19	4-19	4-19	4-19	4-19	8-19	8-19
	H		111	138	152	190	190	219	307	308	364
ANSI	D		89	98	108	117	127	155	178.5	190.5	230
	D1		60	70	79	89	98	121	140	152	191
	n-φe		4-16	4-16	4-16	4-16	4-16	4-19	4-19	4-19	8-19
	H		105	132	149	184	188	219	307	309	369
DIN	D		95.5	100	124.5	134.5	140.5	155	175	184.5	209.5
	D1		65	75	85	100	110	125	145	160	180
	n-φe		4-15	4-15	4-15	4-19	4-19	4-19	4-19	8-19	8-19
	H		111	138	150	190	190	219	307	308	364

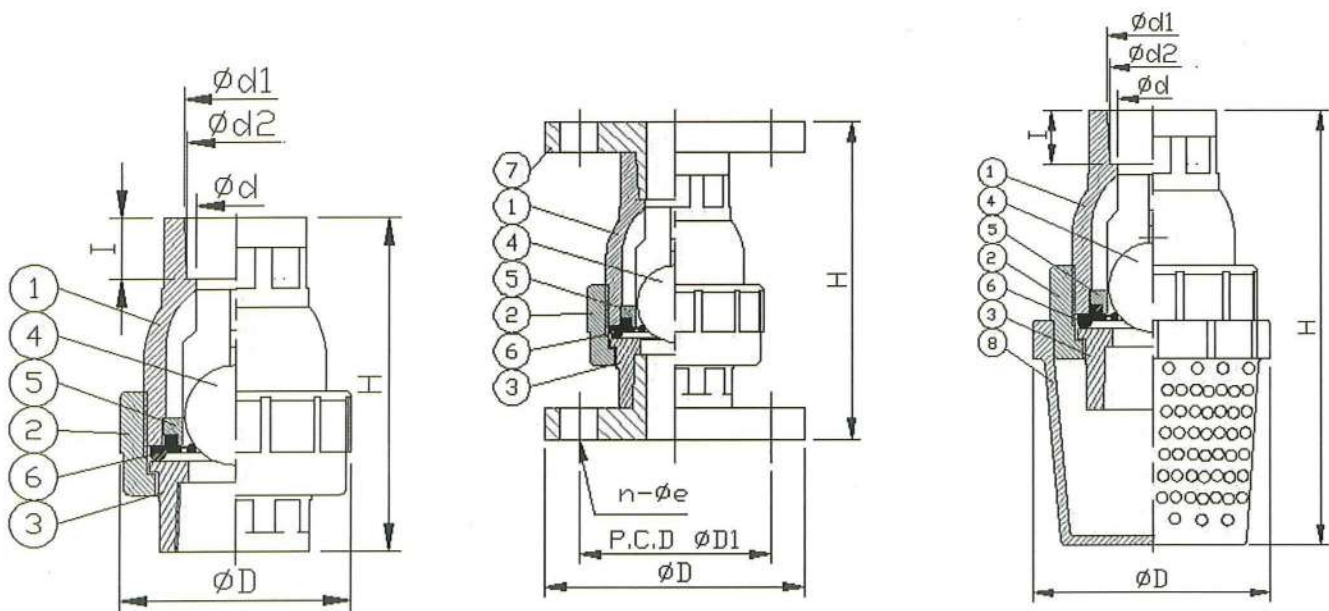
單由令球型(終端)逆止閥 VP 460 470系列.
Ball Check (Foot) Valve



金順億科技有限公司

Nom.	SIZE	1/2" (15mm)	3/4" (20mm)	1" (25mm)	1-1/4" (32mm)	1-1/2" (40mm)	2" (50mm)	2-1/2" (65mm)	3" (80mm)	4" (100mm)
JIS	d1	22.30	26.30	32.33	38.6	48.46	60.56	76.60	89.6	114.7
	d2	21.70	25.70	31.67	37.67	47.54	59.44	75.87	88.83	113.98
	l	22.22	25.4	28.6	31.75	34.9	38.1	61	63	69
ANSI	d1	21.54	26.87	33.65	42.42	48.56	60.63	73.38	89.31	114.76
	d2	21.23	26.57	33.27	42.04	48.11	60.17	72.85	88.7	114.07
	l	22.22	25.40	28.58	31.75	34.93	38.10	44.45	47.63	57.15
DIN	d1	20.3	25.3	32.3	40.3	50.3	63.3	75.3	90.3	110.4
	d2	19.9	24.9	31.9	39.9	49.9	62.9	74.9	89.9	109.9
	l	16	19	22	26	31	38	44	51	61
thd./in.	NPT	14	14	11.5	11.5	11.5	11.5	8	8	8
	BSPT	14	14	11	11	11	11	11	11	11
	D	61	71	83	111	111	124	163	163	225
	d	13	20	25	36	40	50	70	77	102
	H	137	154	169	204	204	241	321	321	392

NO.	PART	MATERIAL	Q'TY
1	BODY	UPVC, CPVC, PP, PVDF	1
2	UNION NUT	UPVC, CPVC, PP, PVDF	1
3	CONNECTOR	UPVC, CPVC, PP, PVDF	1
4	BALL	UPVC, CPVC, PP, PVDF	1
5	GLAND	UPVC, CPVC, PP, PVDF	1
6	SEAL	EPDM, FPM, NBR	1
7	FLANGE	UPVC, CPVC, PP, PVDF	2
8	FILTER	UPVC, CPVC, PP, PVDF	1

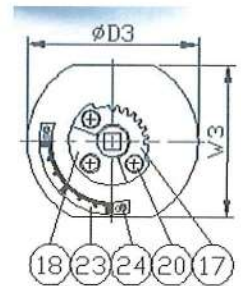


把手式蝶閥 VP-810系列 Butterfly Valve (Handle type)

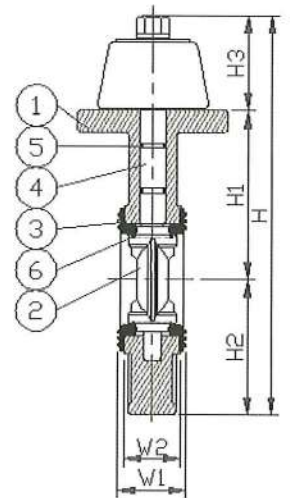
- pressure rating:
2"~8" 150 PSI, @73.4°F (23°C)
- Compact and light-weight design
- Low flow loss
- The scale on top of the body can clearly indicate the opening level.
- Ideally suited in a limited piping space
- 工作壓力：150 PSI @73.4°F (23°C)
- 蝶片開啓角度可由刻度清楚顯示，並可由齒輪片固定
- 全面型墊片密封設計，安全性佳



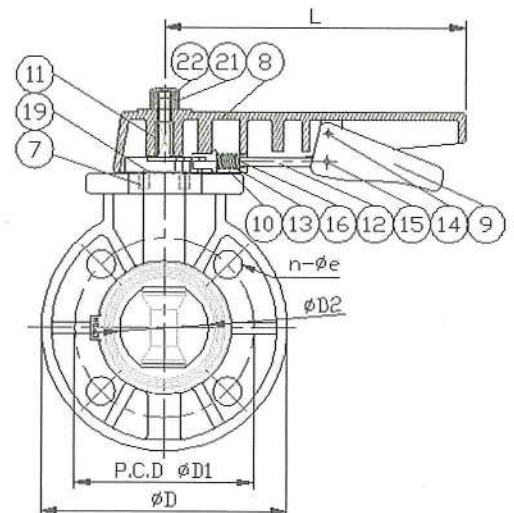
Type 型號	Size 尺寸	Standard 規格	Material 材質	Seat 墊座	O-ring "O"環	Disc 蝶片	End type 接口
VP-810	2"~8"	ANSI, JIS, DIN	PVC	EPDM, FPM	EPDM, FPM	PVC	Flanged
VP-811	2"~8"	ANSI, JIS, DIN	CPVC	EPDM, FPM	EPDM, FPM	CPVC	Flanged
VP-813	2"~8"	ANSI, JIS, DIN	PVDF	EPDM, FPM	EPDM, FPM	PVDF	Flanged
VP-814	2"~8"	ANSI, JIS, DIN	PP	EPDM, FPM	EPDM, FPM	PP	Flanged



Nom.		SIZE	2" (50mm)	2-1/2" (65mm)	3" (80mm)	4" (100mm)	5" (125mm)	6" (150mm)	8" (200mm)
JIS	D1		120	140	150	175	210	240	290
	n- ϕe		4-19	4-19	8-19	8-19	8-23	8-23	12-23
ANSI	D1		121	140	152	191	216	241	298
	n- ϕe		4-19	4-19	4-19	8-19	8-22	8-22	8-22
DIN	D1		125	145	160	180	210	240	295
	n- ϕe		4-18	4-18	8-18	8-18	8-18	8-22	8-22
D			165.5	185	200.5	229	257	288	343
D2			56.5	69.5	79.5	102.5	130	153	203
D3			106	119.5	123.5	134.5	164	170	201
L			199	199	199	252	297	297	297
H			248	267	278.5	318	374	407.5	467
H1			106	115	117	138	164	179	211
H2			73	92.5	100	114.5	128.5	144	171.5
H3			59.5	59.5	61	65.5	81.5	84.5	84.5
W1			42.5	47	47	57	68	70	85
W2			39	44	44	54	62.5	65	79
W3			94	94	94	99.5	110	101	122



NO.	PART	MATERIAL	QTY
1	BODY	UPVC, CPVC, PVDF, PP	1
2	DISC	UPVC, CPVC, PVDF, PP	1
3	SEAT SEAL	EPDM, FPM	1
4	STEM	SUS 410	1
5	STEM O-RING	EPDM, FPM	2
6	DISC O-RING	EPDM, FPM	2
7	INSERT NUT	C3602	3
8	LARGE HANDLE	PP	1
9	SMALL HANDLE	PP	1
10	SPRING LOCK	PP	1
11	HANDLE INSERT	STAINLESS STEEL	1
12	HANDLE LEVER	SUS 304	1
13	SPRING	SUS 304	1
14	SPRING PIN	SUS 304	1
15	SPRING PIN	SUS 304	1
16	WASHER	SUS 304	1
17	LOCKING PLATE	SUS 304	1
18	GEAR SEAT	PP+GF, UPVC, PVDF	1
19	STEM WASHER	SUS 304	1
20	BOLT	SUS 304	3
21	NUT	UPVC, PVDF	1
22	INSERT NUT	C3602	1
23	LEVEL	SUS 304	1
24	RIVET	STAINLESS STEEL	2



齒輪式蝶閥 VP-820系列 Butterfly Valve (Gear Box)

- Pressure rating: 2"~10" 150 PSI,
12" 100 PSI,
14",16" 86 PSI,
18" 72 PSI,
20"~24" 51 PSI,

(Standard stem:

SUS 410+heat process

The stem of SUS 304, or SUS 316,
or SUS 316L the working pressure
is lower.)

- Lower torque and seal hermetically
- Low flow loss
- The opening angle of the disc
could be seen clearly through the
arrow on top of the gear box.
- Ideally suited in a limited piping
space
- Easy to mount actuator with flat
zone design at the top of valve

- 工作壓力：2"~10" 150 PSI,
12" 100 PSI,
14",16" 86 PSI,
18" 72 PSI,
20"~24" 51 PSI,

(標準中心柱材質SUS 410+熱處理，

若中心柱材質為SUS 304, SUS 316

,SUS 316L壓力較低)

低扭力，密閉效果佳

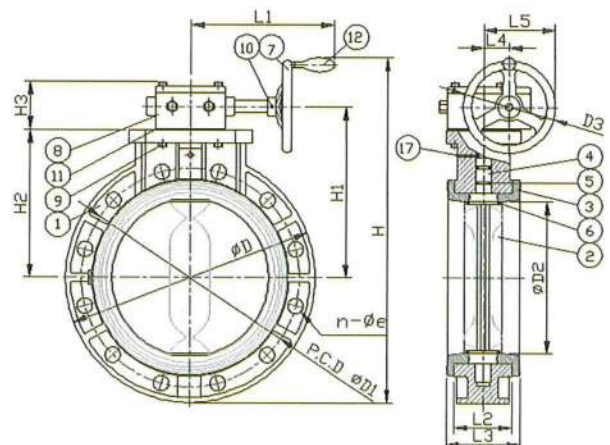
- 蝶片開啓角度可由箭頭指標
- 清楚顯示



Type 型號	Size 尺寸	Standard 規格	Material 材質	Seat 墊座	O-ring "O"環	Disc 蝶片	End type 接口
VP-820	2"~24"	ANSI, JIS, DIN	PVC	EPDM, FPM	EPDM, FPM	PP	Flanged
VP-821	2"~24"	ANSI, JIS, DIN	CPVC	EPDM, FPM	EPDM, FPM	CPVC	Flanged
VP-823	2"~24"	ANSI, JIS, DIN	PVDF	EPDM, FPM	EPDM, FPM	PVDF	Flanged
VP-824	2"~24"	ANSI, JIS, DIN	PP	EPDM, FPM	EPDM, FPM	PP	Flanged

Nom.	SIZE	2"	2-1/2"	3"	4"	5"	6"	8"	10"	12"	14"	16"	18"	20"	24"
		(50mm)	(65mm)	(80mm)	(100mm)	(125mm)	(150mm)	(200mm)	(250mm)	(300mm)	(350mm)	(400mm)	(450mm)	(500mm)	(600mm)
JIS	D1	120	140	150	175	210	240	290	355	400	445	510	565	620	730
	n-φe	4-19	4-19	8-19	8-19	8-23	8-23	12-23	12-25	16-25	16-25	16-27	20-27	20-27	24-33
ANSI	D1	121	140	152	191	216	241	298	362	432	496	540	578	635	750
	n-φe	4-19	4-19	4-19	8-19	8-22	8-22	8-22	12-25	12-25	12-29	16-29	16-32	20-32	20-35
DIN	D1	125	145	160	180	210	240	295	350	400	460	515	565	620	725
	n-φe	4-18	4-18	8-18	8-18	8-18	8-22	8-22	12-22	12-22	16-22	16-26	20-27	20-27	20-30
D		165.5	185	200.5	229	257	288	343	411	490	530	859.6	630	696	813
D2		56.5	69.5	79.5	102.5	130	153	203	255	309.5	355	397.5	452.8	503	603
D3		159	159	159	159	159	202	202	202	250	250	300	300	406	406
H		289	307.5	310	352.5	396.5	464	524	588	702	733	870	910	1037	1166
H1		127	135.5	138	158.5	196.5	221	253.5	283.5	340	342	420	445	486	556
H2		105	113.5	116	136.5	163.5	177	209.5	239.5	298	300	345	370	410	480
H3		53	53	53	53	75	77.5	77.5	77.5	78	78	120	117	143	133
L1		140	140	140	140	140	284.5	284.5	284.5	330	330	353	353	390	390
L2		39	44	44	54	62.5	65	65	104	127	119.5	160	171	180	201
L3		42.5	47	47	57	68	70	70	109	131.5	127	166	179	189	210
L4		41.5	41.5	41.5	41.5	41.5	60	60	60	60	60	81	81	120	120
L5		121	121	121	121	121	161	161	161	185	185	231	231	323	323

NO.	PART	MATERIAL	QTY
1	BODY	UPVC, CPVC, PVDF, PP	1
2	DISC	CPVC, PVDF, PP	1
3	SEAT	EPDM, FPM	1
4	STEM	SUS 410	1
5	O-RING	EPDM, FPM	2
6	O-RING	EPDM, FPM	2
7	HANDWHEEL	FC20	1
8	GEAR BOX	CI POWDER PAINT	1
9	BOLT & WASHER	SUS 304	4
10	SPRING PIN	STEEL	1
11	PACKING	EPDM 6"~14"	1
12	SMALL HANDLE	STEEL	1
13	KEY	STEEL	1
14	SEAL	EPDM 14"~24"	2
15	METAL STAT	C3602 16"~24"	1
16	INSERT NUT	C3602 16"~24"	4~8
17	PIN	SUS	1



插管式/由令式隔膜閥 VP-720系列

Diaphragm Valve (Spigot, Union - Socket / Threaded)



金順億科技有限公司

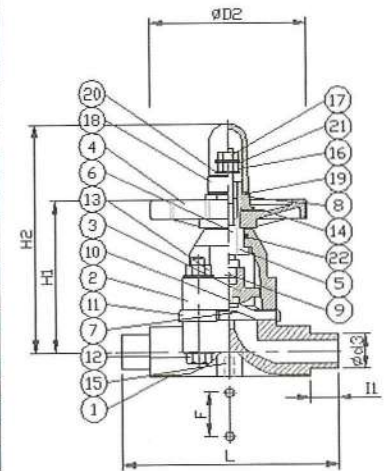
- Pressure rating: 100 PSI
- Smooth operation with clear indication of opening / closing through the gauge cover.
- Low maintenance cost with replaceable diaphragm and long service life
- Adjustable stopper can avoid over tightening

- 工作壓力：100 PSI
- 關閉程度可清楚於透明罩上顯示
- 膜片可替換，保養管理容易
- 可調整的阻擋螺帽設計，可以防止關閉時手輪之壓力過當
- 底端埋有銅柱，易於固定
- 中心柱及套筒可選用SUS 304 / 316L材質

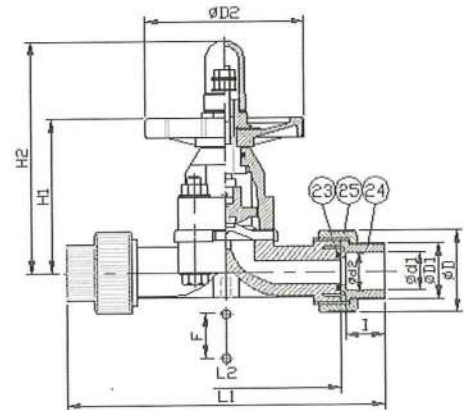


Type 型號	Size 尺寸	Standard 規格	Material 材質	Gasket 墊座	O-ring "O"環	Diaphragm 隔膜片	End type 接口	Bolt 螺栓
VP-720	1/2"~2"	DIN	PVC	EPDM	NBR	EPDM, FPM, PTFE	Spigot	SUS 304/316
VP-721	1/2"~2"	DIN	CPVC	EPDM	NBR	EPDM, FPM, PTFE	Spigot	SUS 304/316
VP-723	1/2"~2"	DIN	PVDF	EPDM	NBR	EPDM, FPM, PTFE	Spigot	SUS 304/316
VP-724	1/2"~2"	DIN	PP	EPDM	NBR	EPDM, FPM, PTFE	Spigot	SUS 304/316
VP-730	1/2"~2"	ANSI, JIS, DIN	PVC	EPDM	NBR/EPDM, FPM	EPDM, FPM, PTFE	Spigot, Threaded	SUS 304/316
VP-731	1/2"~2"	ANSI, JIS, DIN	CPVC	EPDM	NBR/EPDM, FPM	EPDM, FPM, PTFE	Spigot, Threaded	SUS 304/316
VP-733	1/2"~2"	ANSI, JIS, DIN	PVDF	EPDM	NBR/EPDM, FPM	EPDM, FPM, PTFE	Spigot, Threaded	SUS 304/316
VP-734	1/2"~2"	ANSI, JIS, DIN	PP	EPDM	NBR/EPDM, FPM	EPDM, FPM, PTFE	Spigot, Threaded	SUS 304/316

Nom.	SIZE	1/2"	3/4"	1"	1-1/2"	2"
		(15mm)	(20mm)	(25mm)	(40mm)	(50mm)
JIS	d1	22.30	26.30	32.33	48.46	60.56
	d2	21.70	25.70	31.67	47.54	59.44
	I	22.2	25.4	28.6	34.9	38.1
ANSI	d1	21.54	26.87	33.65	48.56	60.63
	d2	21.23	26.57	33.27	48.11	60.17
	I	22.22	25.4	28.58	34.93	38.1
DIN	d1	20.3	25.3	32.3	50.3	63.3
	d2	19.9	24.9	31.9	49.9	62.9
	I	16	19	22	31	38
BS	d1	21.5	26.9	33.7	48.4	60.5
	d2	21.3	26.7	33.5	48.2	60.3
	I	16.5	19.5	22.5	30	36
thd./in	NPT	14	14	11.5	11.5	11.5
	BSPT	14	14	11	11	11
D		46	55	66	97	120
D1		31	37	44	64	78
D2		95	95	110	150	150
d3		20	25	32	50	63
L2		130	150	160	200	230
L1		180	207	224	276	317
L		124	144	154	194	224
H2		128	138	144	220	225
H1		86	95	98	150	148
I1	PVC	16	19	22	31	34
	PP, PVDF	14.5	16	18	23.5	27.5
S		11	11	11	15	15
F		25	25	25	45	45
M		M6	M6	M6	M8	M8



NO.	PART	MATERIAL	Q'TY
1	BODY	UPVC, PP, PVDF, CPVC	1
2	BONNET	UPVC, PP, PP+GF, CPVC, PVDF	1
3	COMPRESSOR	FC, SUS	1
4	HANDWHEEL	PP	1
5	SLEEVE	C3602	1
6	STEM	C3602	1
7	DIAPHRAGM	EPDM, FPM, PTFE	1
8	CAP	UPVC, PP, PP+GF, CPVC, PVDF	1
9	COMPRESSOR PIN	SUS 304	1
10	INSERTED METAL	C3602, SUS 304	1
11	RUBBER LINER	SUS 304	1
12	BOLTS & WASHERS	SUS 304	4
13	NUTS & WASHERS	SUS 304	4
14	NAME PLATE	PVC	1
15	BOTTOM NUT	C 3602	2
16	STOPPER	SUS 304	1
17	SET NUT	SUS 304	1
18	GAUGE COVER	AS	1
19	SHEET GASKET	EPDM	1
20	SHEET RING	SUS 304	1
21	INDICATIVE WASHER	ABS	1
22	O-RING	NBR	1
23	O-RING	EPDM, FPM	2
24	END CONNECTOR	UPVC, PVDF, PP, CPVC	2
25	UNION NUT	UPVC, PVDF, PP, CPVC	2



Caution The valve is completely closed when handwheel can't turn more with normal torque, but it will cause the unrecoverable divulsion of diaphragm if the handwheel is continually forced to turn in such above condition !

注意 手輪正常旋緊至無法繼續時即代表閥門已完全關閉，切勿再強迫旋轉避免造成無法修復之膜片撕裂現象！

法蘭式隔膜閥 VP-710系列 Diaphragm Valve (Flanged)

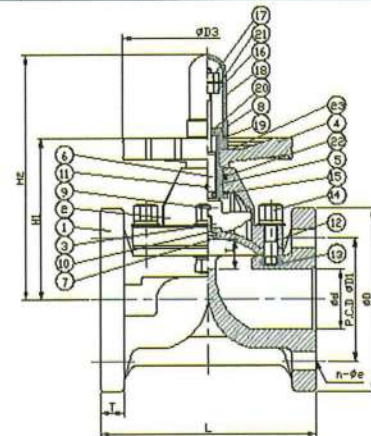
- pressure rating:
1/2"~3" 150 PSI, 4"~6" 72 PSI,
8" 43 PSI
(Working pressure is varied by
rawmaterial of diaphragm and
temperature.)
- Smooth operation with clear
indication of opening / closing
through the gauge cover
- Low maintenance cost with
replaceable diaphragm and long
service life
- Adjustable stopper can avoid
over tightness.
- 工作壓力：1/2"~3" 150 PSI, 4"~6" 72 PSI,
8" 43 PSI
(因DIAPHRAGM之材質、工作溫度不同而壓
力會不同)
- 關閉程度可清楚於透明罩上顯示
- 膜片可替換，保養管理容易
- 可調整的阻擋螺帽設計，可以防止關
閉時手輪之壓力過當
- 法蘭片底部有平面設計，便於安裝及放置
- 中心柱及套筒可選用SUS 304 / 316 L材質



Type 型號	Size 尺寸	Standard 規格	Material 材質	Seat 墊座	O-ring 墊座	Diaphragm 隔膜片	End type 接口	Bolt 螺栓
VP-710	1/2"~8"	ANSI, JIS, DIN	PVC	PTFE	NBR	EPDM, FPM, PTFE	Flanged	SUS 304/316
VP-711	1/2"~8"	ANSI, JIS, DIN	CPVC	PTFE	NBR	EPDM, FPM, PTFE	Flanged	SUS 304/316
VP-713	1/2"~8"	ANSI, JIS, DIN	PVDF	PTFE	NBR	EPDM, FPM, PTFE	Flanged	SUS 304/316
VP-714	1/2"~8"	ANSI, JIS, DIN	PP	PTFE	NBR	EPDM, FPM, PTFE	Flanged	SUS 304/316

Nom.	SIZE	1/2"	3/4"	1"	1-1/2"	2"	2-1/2"	3"	4"	6"	8"
		(15mm)	(20mm)	(25mm)	(40mm)	(50mm)	(65mm)	(80mm)	(100mm)	(150mm)	(200mm)
JIS	D	95	100	125	140	155	175	185	210	291	343
	D1	70	75	90	105	120	140	150	175	240	290
	n-φe	4-15	4-15	4-19	4-19	4-19	4-19	8-19	8-19	8-23	12-23
	L	110	120	130	180	210	250	280	340	480	570
ANSI	D	89	98	108	127	152	178	191	229	291	343
	D1	61	70	79	98	121	140	152	191	241	298
	n-φe	4-16	4-16	4-16	4-16	4-19	4-19	4-19	8-19	8-22	8-22
	L	108	150	150	176	202	250	264	329	480	570
DIN	D	95	105	115	150	165	185	200	220	291	343
	D1	65	75	85	110	125	145	160	180	240	295
	n-φe	4-14	4-14	4-14	4-18	4-18	4-18	8-18	8-18	8-23	8-23
	L	130	150	160	200	230	290	310	350	480	570
JIS	UPVC, CPVC	12	13	13	17	20	22	22	23	26	30
	PP, PVDF	13	14	14	18	21	23	24	25	25	35
	UPVC, CPVC	12	15	18	15	19	20	20	23	26	30
ANSI T	PP, PVDF	13	16	19	16	20	21	23	25	28	35
	UPVC, CPVC	19	20	20	19	22	22	24	24	26	30
DIN	UPVC, CPVC	20	21	21	20	23	23	26	26	28	35
	PP, PVDF	20	21	21	20	23	23	26	26	28	35
D2		54 × 70	63 × 78	63 × 88	125	148	182	203	255	385	430
D3		95	95	110	150	150	210	210	250	410	405
d		13	18	25	41	52	67	78	100	148	198
H1		85	94	98	130	148	189	250	275	334	450
H2		130	137	160	200	225	268	343	383	476	627
I		10	12	15	22	31	39	48	60	70	95

NO.	PART	MATERIAL	Q'TY
1	BODY	UPVC, PP, PVDF, CPVC	1
2	BONNET	UPVC, PP, PP+GF, CPVC, PVDF	1
3	COMPRESSOR	FC, SUS, PPG, PVDF	1
4	HANDHEEL	PP	1
5	SLEEVE	C3602, SUS	1
6	STEM	C3602, SUS	1
7	DIAPHRAGM	EPDM, FPM, PTFE	1
8	CAP	UPVC, PP, PVDF, CPVC	1
9	COMPRESSOR PIN	SUS 304	1
10	INSERTED METAL	C3602, SUS 304	1
11	GREASE NIPPLE	C3602, (65-200)	1
12	BOLT & WASHER	200mm-----16 SET	} SUS 304 / 316
13	INSERTED NUT	150mm-----12 SET	
14	NUT & WASHER	65-125mm-----8 SET	
		25-50mm-----6 SET	
15	THRUST BEARING	STANDARD (100-200)	1
16	STOPPER	SUS 304	1
17	SET NUT	SUS 304	1
18	GAUGE COVER	AS	1
19	SHEET GASKET	EPDM	1
20	SHEET RING	SUS 304	1
21	SPRING WASHER	SUP	1
22	O-RING	NBR	1
23	LOGO PLATE	UPVC	1



Caution! The valve is completely closed when handwheel can't turn more with normal torque, but it will cause the unrecoverable divulsion of diaphragm if the handwheel is continually forced to turn in such above condition!

注意! 手輪正常旋緊至無法繼續時即代表閥門已完全關閉，切勿再強迫旋轉避免造成無法修復之膜片撕裂現象!

工業用擺動式逆止閥 VP-450系列 Swing Check Valve



金順億科技有限公司

- Minimum flow pressure: 2 PSI
- Install vertically or horizontally, with arrow to indicate flow direction
- Easy to clean by removing the top bonnet.
- Less on-line down time for maintenance
- To avoid blocking, it is recommended to install filter in front of the valve.
- 最低開啓壓力：2 PSI
- 依流向箭頭指示水平或垂直安裝
- 可直接清理閥體，無須自管路拆除
- 前端管路建議安裝過濾器，以防閥門被阻塞



Type 型號	Size 尺寸	Standard 規格	Material 材質	End type 接口	Gasket 墊片
VP-450	1/2"~8"	ANSI, JIS, DIN	PVC	Flanged	EPDM, FPM, NBR, PTFE
VP-451	1/2"~8"	ANSI, JIS, DIN	CPVC	Flanged	EPDM, FPM, NBR, PTFE
VP-453	1/2"~8"	ANSI, JIS, DIN	PVDF	Flanged	EPDM, FPM, NBR, PTFE
VP-454	1/2"~8"	ANSI, JIS, DIN	PP	Flanged	EPDM, FPM, NBR, PTFE

Nom.	SIZE	SIZE										
		1/2" (15mm)	3/4" (20mm)	1" (25mm)	1-1/4" (32mm)	1-1/2" (40mm)	2" (50mm)	2-1/2" (65mm)	3" (80mm)	4" (100mm)	6" (150mm)	8" (200mm)
JIS	D	100	100	125	140	140	155	175	185	210	285	343
	D1	70	75	90	100	105	120	140	150	175	240	290
	L	140	140	160	180	180	200	240	260	300	400	500
	n-φe	4-φ15	4-φ15	4-φ19	4-φ19	4-φ19	4-φ19	4-φ19	8-φ19	8-φ19	8-φ23	12-φ23
ANSI	D	100	100	108	127	127	152	178	191	229	285	343
	D1	60	70	79	88.9	98	121	140	152	191	241	298
	L	140	140	160	180	180	200	240	260	300	400	500
	n-φe	4-φ16	4-φ16	4-φ16	4-φ16	4-φ16	4-φ19	4-φ19	4-φ19	8-φ19	8-φ22	8-φ22
DIN	D	100	100	115	150	150	165	185	200	220	285	343
	D1	65	75	85	100	110	125	145	160	180	240	295
	L	140	140	160	180	180	200	240	260	300	400	500
	n-φe	4-φ14	4-φ14	4-φ18	4-φ18	4-φ18	4-φ18	4-φ18	8-φ18	8-φ18	8-φ23	8-φ23
T		15	15	17	19	19	20	22	22	24	26	30
H		93	93	117.5	136	137	165	170.5	170	216	286	336

NO.	PART	MATERIAL	QTY
1	BODY	HI-PVC, UPVC, CPVC, PP, PVDF	1
2	BONNET	HI-PVC, UPVC, CPVC, PP, PVDF	1
3	DISC	HI-PVC, UPVC, CPVC, PP, PVDF	1
4	DISC HOLDER	HI-PVC, UPVC, CPVC, PP, PVDF	1
5	SWAY ARM	HI-PVC, UPVC, CPVC, PP, PVDF	1
6	DISK GASKET	EPDM, FPM, NBR, PTFE	1
7	GASKET	EPDM, FPM, NBR, PTFE	1
8	SHAFT	PTFE	1
9	DISK NUT	HI-PVC, UPVC, CPVC, PP, PVDF	1
10	DISK WASHER	HI-PVC, UPVC, CPVC, PP, PVDF	1
11	SHEET GASKET	EPDM, FPM, NBR, PTFE	1
12	SHEET BOLT	HI-PVC, UPVC, CPVC, PP, PVDF	1
13	DISC BOLT	HI-PVC, UPVC, CPVC, PP, PVDF	4-8
14	BOLT SETS	STEEL, SUS 304	8-12

P.S.:PVC不建議使用於污泥管路系統

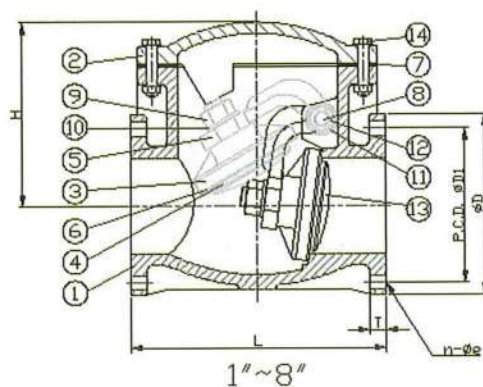
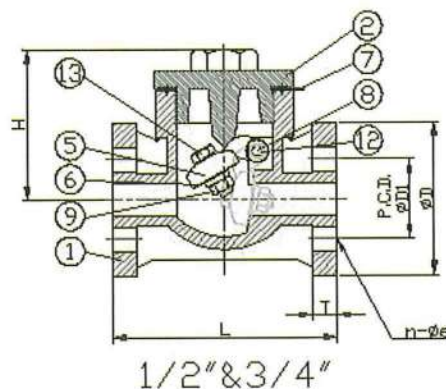
Swing check Valve 使用參考壓力和溫度關係

VP-450 Table of Temperature / Water Pressure (Reference)

Unit: kgf / cm²

Material	U-PVC		PP				PVDF		
	EPDM	FPM	EPDM	PTFE	PTFE	PTFE	PTFE		
SIZE	0-50	0-50	-20-60	61-80	-20-60	61-80	-20-60	61-80	81-100
15 (1/2")	7	6	7	6	6	5	6	5	4
20 (3/4")	7	6	7	6	6	5	6	5	4
25 (1")	7	6	7	6	6	5	6	5	4
40 (1 1/2")	7	6	7	6	6	5	6	5	4
50 (2")	7	6	7	6	6	5	6	5	4
65 (2 1/2")	7	6	7	6	6	5	6	5	4
80 (3")	7	5	7	6	5	4	5	4	3
100 (4")	5	5	5	4	5	4	5	4	3
125 (5")	5	4	5	4	4	3	4	3	2.5
150 (6")	5	3	5	4	3	2	3	2.5	2
200 (8")	3	3	3	2	3	2	3	2.5	2

P.S.:安裝時，特別注意水錘及脈衝現象



T(Y) 型過濾器 VP-220系列

T(Y) type Strainer



金順億科技有限公司

- Screen options include several mesh sizes with easy and rapid interchangeability.
- Screen specification:
T type-SUS 304 / 316L,
60 / 40 / 20 mesh
Y type-60 / 40 / 20 mesh

- 濾網拆卸清洗方便
- 濾網規格：
T型-SUS 304 / 316
PP / PVC / CPVC
60 / 40 / 20 mesh
3~8mm孔目等客戶訂製規格
Y型-PE / 20 mesh
SUS / 40 / 60 mesh

註：Comparative Particle size
20 Mesh ≈ 0.034 inches
40 Mesh ≈ 0.015 inches
60 Mesh ≈ 0.0092 inches

Type 品號	Size 尺寸	Standard 規格	Material 材質	Gasket/Seal 墊片	End type 接口
VP-220 T type	2"~8"	ANSI, JIS, DIN	PVC	EPDM, PTFE, FPM	Flanged
VP-220 Y type	1/2"~2"	ANSI, JIS, DIN	PVC	NR	Union, Socket, Flanged
VP-221 T type	2"~8"	ANSI, JIS, DIN	CPVC	EPDM, PTFE, FPM	Flanged
VP-221 Y type	1/2"~2"	ANSI, JIS, DIN	CPVC	NR	Union, Socket, Flanged



T(Y) 型過濾器

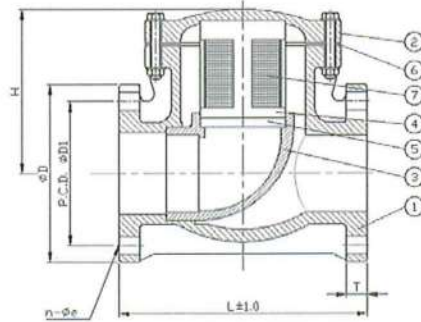
T(Y) type Strainer



T-type Strainer DIM.

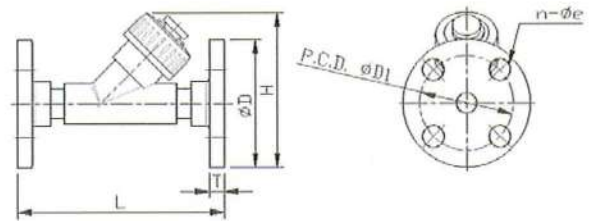
SIZE		2"	2-1/2"	3"	4"	6"	8"
Nom.		(50mm)	(65mm)	(80mm)	(100mm)	(150mm)	(200mm)
JIS	D	155	175	185	210	285	330
	D1	120	140	150	175	240	290
	n-φe	4-φ19	4-φ19	8-φ19	8-φ19	8-φ23	12-φ23
ANSI	D	152	178	191	229	285	343
	D1	121	140	152	191	241	298
	n-φe	4-φ19	4-φ19	4-φ19	8-φ19	8-φ22	8-φ22
DIN	D	165	185	200	220	285	343
	D1	125	145	160	180	240	295
	n-φe	4-φ18	4-φ18	8-φ18	8-φ18	8-φ22	8-φ22
L		200	240	260	300	400	500
H		166	170.5	170	216	286	336
T		20	22	22	24	26	30

NO.	PART	QTY	MATERIAL
1	BODY	1	UPVC, CPVC
2	BONNET	1	UPVC, CPVC
3	90° ELL	1	UPVC, CPVC
4	INNER BODY	1	UPVC, CPVC
5	OUTER BODY	1	UPVC, CPVC
6	GASKET	1	EPDM, FPM
7	FILTER	1	SUS304 or 316L



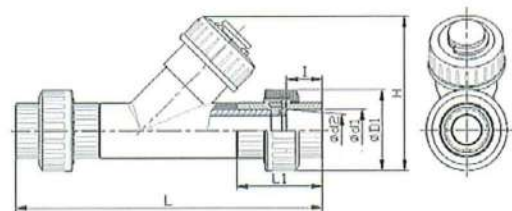
Y-type Strainer (Flanged) DIM.

SIZE		1/2"	3/4"	1"	1-1/4"	1-1/2"	2"
Nom.		(15mm)	(20mm)	(25mm)	(32mm)	(40mm)	(50mm)
JIS	D	95	100	125	135	140	155
	D1	70	75	90	100	105	120
	L	160	175	202	245	247	292
	T	14	15	15	16	16	20
	n-φe	4-15	4-15	4-19	4-19	4-19	4-19
ANSI	D	89	98	108	117	127	152
	D1	61	70	79	89	98	121
	L	154	170	200	245	250	290
	T	11	12	14	16	17.5	19
	n-φe	4-16	4-16	4-16	4-16	4-16	4-19



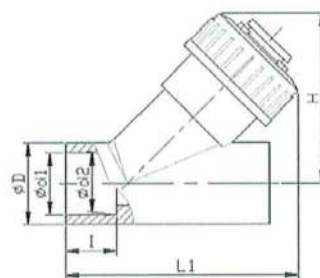
Y-type Strainer (Union) DIM.

SIZE		1/2"	3/4"	1"	1-1/4"	1-1/2"	2"
Nom.		(15mm)	(20mm)	(25mm)	(32mm)	(40mm)	(50mm)
JIS	d1	22.30	26.30	32.33	38.43	48.46	60.56
	d2	21.70	25.70	31.67	37.57	47.54	59.44
	I	22.22	25.4	28.58	31.75	34.93	38.10
ANSI	d1	21.54	26.87	33.65	42.42	48.56	60.63
	d2	21.23	26.57	33.27	42.04	48.11	60.17
	I	22.22	25.40	28.58	31.75	34.93	38.10
DIN	d1	20.30	25.30	32.30	40.30	50.30	63.30
	d2	19.90	24.90	31.90	39.90	49.90	62.90
	I	16	19	22	26	31	38
D1		46.5	55	66	82	98	120
L		202	233	261	324	334	377
L1		56	64	72	87	90	98



Y-type Strainer (Socket) DIM.

SIZE		1/2"	3/4"	1"	1-1/4"	1-1/2"	2"
Nom.		(15mm)	(20mm)	(25mm)	(32mm)	(40mm)	(50mm)
ANSI	d1	21.54	26.87	33.65	42.42	48.56	60.63
	d2	21.23	26.57	33.27	42.04	48.11	60.17
	I	22.22	25.40	28.58	31.75	34.93	38.10
D		30	36	44	61	61	77
L1		90	105	117	150	154	181



氣動式蝶閥 VP-830系列

Pneumatic Actuator Butterfly Valve



金順億科技有限公司

- Pressure rating: 2"~10" 150 PSI, 12" 100 PSI, 14",16" 86 PSI, 18" 72 PSI, 20"~24" 51 PSI,
- Low flow loss
- The opening angle of the disc could be seen clearly through the position indicator.
- Fast / Efficient operation for automatic control system in a limited piping space
- Pneumatic actuator specification meets with ISO 5211, VDI / VDE 3845, DIN 3337, NAMUR, easy to assemble solenoid valve, limit Switches and accessories.
- Pneumatic actuator max. Air Supply pressure 8 kg/cm² min. air pressure 5 kg/cm²
- 工作壓力：2"~10" 150 PSI, 12" 100 PSI, 14",16" 86 PSI, 18" 72 PSI, 20"~24" 51 PSI,
- 蝶片開啓角度可由位址顯示器取
- 氣動驅動器規格符合ISO 5211, NAMUR可加裝電磁閥、微動開關及其他附屬配件
- 氣動驅動器建議最大進氣空壓 8 kg/cm²，最小5 kg/cm²

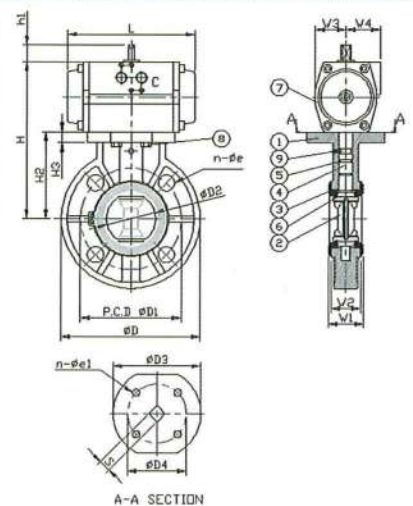


Type 型號	Size 尺寸	Standard 規格	Material 材質	Seat 墊座	O-ring "O"環	Disc 蝶片	End type 接口
VP-830	2"~24"	ANSI, JIS, DIN	PVC	EPDM, FPM	EPDM, FPM	PP	Flanged
VP-831	2"~24"	ANSI, JIS, DIN	CPVC	EPDM, FPM	EPDM, FPM	CPVC	Flanged
VP-833	2"~24"	ANSI, JIS, DIN	PVDF	EPDM, FPM	EPDM, FPM	PVDF	Flanged
VP-834	2"~24"	ANSI, JIS, DIN	PP	EPDM, FPM	EPDM, FPM	PP	Flanged

Nom.	SIZE	SIZE															
		2" (50mm)	2-1/2" (65mm)	3" (80mm)	4" (100mm)	5" (125mm)	6" (150mm)	8" (200mm)	10" (250mm)	12" (300mm)	14" (350mm)	16" (400mm)	18" (450mm)	20" (500mm)	24" (600mm)		
JIS	D1	120	140	150	175	210	240	290	355	400	445	510	565	620	730		
	n-φe	4-19	4-19	8-19	8-19	8-23	8-23	12-23	12-25	16-25	16-25	16-27	20-27	20-27	24-33		
ANSI	D1	121	140	152	191	216	241	298	362	432	476	540	578	635	750		
	n-φe	4-19	4-19	4-19	8-19	8-22	8-22	8-22	12-25	12-25	12-29	16-29	16-32	20-32	20-35		
DIN	D1	125	145	160	180	210	240	295	350	400	460	515	565	620	725		
	n-φe	4-18	4-18	8-18	8-18	8-18	8-22	8-22	12-22	12-22	16-22	16-26	20-27	20-27	20-30		
D		165.5	185	200.5	229	257	288	343	411	490	530	596	630	696	813		
D2		56.5	69.5	79.5	102.5	130	153	203	255	309.5	355	397.5	452.5	503	603		
D3		106	119.5	123.5	134.5	164	170	201	205	237	236	300	326	328	328		
H2		105	113.5	116	136.5	163.5	177	209.5	239.5	298	300	345	370	410	480		
H3		14.5	14	14	14	14.5	19	23.5	22	26	25.5	32	32	33	43		
W1		42.5	47	47	57	68	70	85	109	131.5	127	166	179	189	210		
W2		39	44	44	54	62.5	65	79	104	127	119.5	160	171	180	201		
T-DIN259 BSP		1/4"	1/4"	1/4"	1/4"	1/4"	1/4"	1/4"	1/4"	1/4"	1/4"	1/4"	1/2"	1/2"	1/2"		
DOUBLE ACTING	d1	7	7	9	9	9	11	11	11	13	-	-	-	-	-		
	D4	50	50	70	70	70	102	102	102	125	-	-	-	-	-		
	h1	20	20	20	20	20	20	30	30	30	-	-	-	-	-		
	H1	189.75	198.5	217.75	238.5	278.5	304	366.5	396.5	494	-	-	-	-	-		
	L	158.5	158.5	210.5	210.5	247.5	268.5	345	345	437.5	-	-	-	-	-		
	S	14	14	17	17	17	22	27	27	27	-	-	-	-	-		
	W3	36	36	42	42	48	55	66.5	66.5	81	-	-	-	-	-		
CPRING RETURN	d1	7	7	9	9	11	11	13	13	-	-	-	-	-	-		
	D4	50	50	70	70	102	102	125	125	-	-	-	-	-	-		
	h1	20	20	20	20	20	30	30	30	-	-	-	-	-	-		
	H1	206.75	215.5	230.75	251.5	290.5	334	405.5	435.5	-	-	-	-	-	-		
	L	210.5	210.5	247.5	247.5	268.5	345	437.5	437.5	-	-	-	-	-	-		
	S	17	17	17	17	22	27	27	27	-	-	-	-	-	-		
	W3	42	42	48	48	55	66.5	81	81	-	-	-	-	-	-		
W4	52	52	57	57	67	82	99	99	-	-	-	-	-	-			

SIZE	MAX. AIR INLET PRESSURE (kg/cm ²)	PNEUMATIC ACTUATOR MIN AIR PRESSURE 4kg/cm ²	
		DOUBLE ACTING	SPRING RETURN
2"	8	AT10 DA	AT20 SR
2-1/2"	8	AT10 DA	AT20 SR
3"	8	AT20 DA	AT25 SR
4"	8	AT20 DA	AT25 SR
5"	8	AT25 DA	AT30 SR
6"	8	AT30 DA	AT40 SR
8"	8	AT35 DA	AT45 SR
10"	8	AT45 DA	AT50 SR
12"	8	AT50 DA	AT55 SR
14"	8	AT55 DA	AT65 SR
16"	8	AT60 DA	AT25 SR
18"	8	AT65 DA	AT70 SR
20"	8	AT65 DA	AT70 SR
24"	8	AT65 DA	AT70 SR

No.	PART NAME	MATERIAL	Q'TY
1	BODY	UPVC, CPVC, PVDF, PP	1
2	DISC	UPVC, CPVC, PVDF, PP	1
3	SEAT SEAL	EPDM, FPM	1
4	STEM	SUS 410	1
5	STEM O-RING	EPDM, FPM	2
6	DISC O-RING	EPDM, FPM	2
7	PNEUMATIC ACTUATORS	EXTRUDED ALUMINIUM ALLOY	1
8	BOLT & WASHER	SUS	4
9	PIN	SUS	1



備註 1.上述氣動及電動驅動器(Pneumatic Actuator) 搭配型號及圖形僅供參考，可依客戶需求選用。
2.相關規格資料歡迎進一步向本公司洽詢。

氣動式/電動式雙由令球閥 VP-680.690系列 Pneumatic / Electric Actuator Double Union Ball Valve



金順億科技有限公司

- pressure rating: 150 PSI @73.4°F (23°C)
- Pneumatic actuator specification meets with ISO 5211, DIN 3337, VDI / VDE 3845, NAMUR, easy to assemble solenoid valve, limit switches and accessories.
- Pneumatic actuator max. Air Supply pressure 8 Kg/cm², min. air pressure 5 kg/cm²
- Electric actuator operation voltage 1-phase 110 / 220 V 3-phase 220 / 380 / 460 V
- Electric actuator could manually operate w/o clutch and break

- 工作壓力：150 PSI @73.4°F (23°C)
- 氣動驅動器建議最大進氣空壓：8kg/cm²，最小5kg/cm²
- 氣動驅動器規格符合：ISO 5211, DIN 3337, VDI / VDE 3845, NAMUR可加裝電磁閥、微動開關及其他附屬配件。
- 操作電壓：AC單相110 / 220V三相220 / 380 / 460V
- 電動換手動操作時，不須離合器及煞車即可操作



Type 型號	Size 尺寸	Standard 規格	Material 材質	Seat 墊座	O-ring 墊座	End type 接口
VP-680 690	1/2"~4"	ANSI, JIS, DIN, BS	PVC	PTFE	EPDM, FPM	Socket, Threaded, Flanged
VP-681 691	1/2"~4"	ANSI, JIS, DIN, BS	CPVC	PTFE	EPDM, FPM	Socket, Threaded, Flanged
VP-683 693	1/2"~4"	ANSI, JIS, DIN, BS	PVDF	PTFE	EPDM, FPM	Socket, Threaded, Flanged
VP-684 694	1/2"~4"	ANSI, JIS, DIN, BS	PP	PTFE	EPDM, FPM	Socket, Threaded, Flanged
VP-685 695	1/2"~4"	ANSI, JIS, DIN, BS	ABS	PTFE	EPDM, FPM	Socket, Threaded, Flanged

● There is no flanged end for BS

Nom.	SIZE	1/2"	3/4"	1"	1-1/4"	1-1/2"	2"	2-1/2"	3"	4"
		(15mm)	(20mm)	(25mm)	(32mm)	(40mm)	(50mm)	(65mm)	(80mm)	(100mm)
JIS	d1	22.30	26.30	32.33	38.43	48.46	60.56	76.60	89.6	114.7
	d2	21.70	25.70	31.67	37.57	47.54	59.44	75.87	88.83	113.98
	I	22.22	25.4	28.6	31.8	34.9	38.1	61	63	69
ANSI	d1	21.54	26.87	33.65	42.42	48.56	60.63	73.38	89.31	114.76
	d2	21.23	26.57	33.27	42.04	48.11	60.17	72.85	88.7	114.07
	I	22.22	25.40	28.58	31.75	34.93	38.10	44.45	47.63	57.15
DIN	d1	20.3	25.3	32.3	40.3	50.3	63.3	75.3	90.3	110.4
	d2	19.9	24.9	31.9	39.9	49.9	62.9	74.9	89.9	109.9
	I	16	19	22	26	31	38	44	51	61
BS	d1	21.5	26.9	33.7	42.4	48.4	60.5	-	-	-
	d2	21.3	26.7	33.5	42.2	48.2	60.3	-	-	-
	I	16.5	19.5	22.5	27	30	36	-	-	-
thd./in	NPT	14	14	11.5	11.5	11.5	11.5	8	8	8
	PT	14	14	11	11	11	11	11	11	11
D		46.5	55	66	82	98	120	140	163	225
D1		31	37	45	54	65	79	92	108	146
d		13	18	23	30	38	48	61	69	99
L		114	135	149	168	175	208	275	304	332
L1		60	73	79	88	95	114	138	158	176

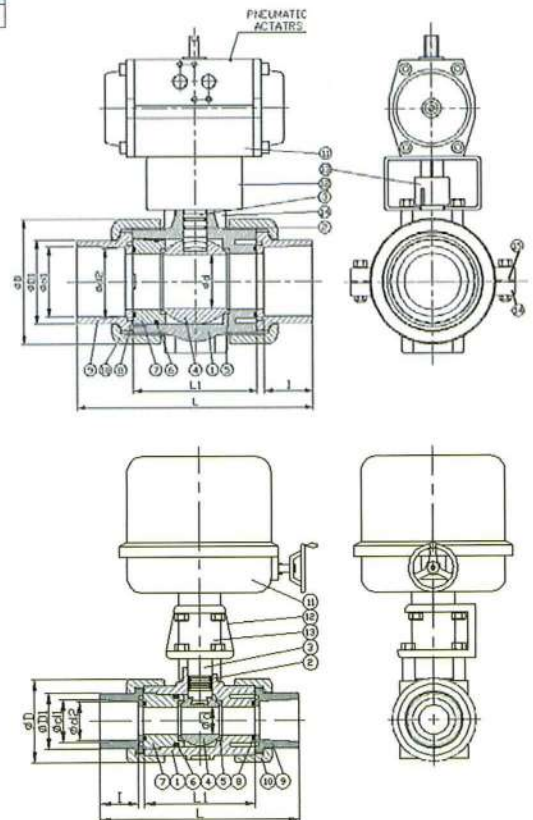
NO.	PART	MATERIAL	QTY
1	BODY	UPVC, CPVC, PP, PVDF, ABS	1
2	STEM O-RING	EPDM, FPM	2
3	STEM	UPVC, CPVC, PP, PVDF, ABS	1
4	BALL	UPVC, CPVC, PP, PVDF, ABS	1
5	SEAT SEAL	PTFE	2
6	CARRIER O-RING	EPDM, FPM	1
7	SEAL CARRIER	UPVC, CPVC, PP, PVDF, ABS	1
8	UNION O-RING	EPDM, FPM	2
9	END CONNECTOR	UPVC, CPVC, PP, PVDF, ABS	2
10	UNION NUT	UPVC, CPVC, PP, PVDF, ABS	2
11	PNEUMATIC ACTUATORS	EXTRUDED ALUMINUM ALLOY	1
12	MOUNTING PAD	SUS	1
13	COUPLING	SUS	1
14	SUPPORT(2 1/2"-4")	UPVC	2
15	GASKET (2 1/2"-4")	EPDM	2

SIZE	MAX AIR SUPPLY PRESSURE (kg/cm ²)	PNEUMATIC ACTUATOR MIN AIR PRESSURE 5 kg/cm ²	
		DOUBLE ACTING	SPRING RETURN
1/2"	8	AT80 DA	AT05 SR
3/4"	8	AT80 DA	AT05 SR
1"	8	AT05 DA	AT05 SR
1-1/4"	8	AT10 DA	AT10 SR
1-1/2"	8	AT10 DA	AT10 SR
2"	8	AT10 DA	AT20 SR
2-1/2"	8	AT20 DA	AT25 SR
3"	8	AT25 DA	AT35 SR
4"	8	AT35 DA	AT40 SR

NO.	PART	MATERIAL	QTY
1	BODY	UPVC, CPVC, PP, PVDF, ABS	1
2	STEM O-RING	EPDM, FPM	2
3	STEM	UPVC, CPVC, PP, PVDF, ABS	1
4	BALL	UPVC, CPVC, PP, PVDF, ABS	1
5	SEAT SEAL	PTFE	2
6	CARRIER O-RING	EPDM, FPM	1
7	SEAL CARRIER	UPVC, CPVC, PP, PVDF, ABS	1
8	UNION O-RING	EPDM, FPM	2
9	END CONNECTOR	UPVC, CPVC, PP, PVDF, ABS	2
10	UNION NUT	UPVC, CPVC, PP, PVDF, ABS	2
11	ELECTRIC ACTUATOR	ALUMINUM ALLOY ENCLOSURE	1
12	MOUNTING PAD	SUS	1
13	COUPLING	SUS	1

SIZE	ELECTRIC ACTUATOR		ELECTRIC ACTUATOR	Single-phase					Three-phase				
	WITH HANDWHEEL	WITHOUT HANDWHEEL		110V	220V	220V	380V	440V	220V	380V	440V		
1/2"	OM2	OM1	BM2	V	V	V	V	V	V	V	V	V	
3/4"	OM2	OM1	OM1	V	V	X	X	X	X	X	X	X	
1"	OM2	OM1	OMA	V	V	X	X	X	X	X	X	X	
1-1/4"	OM2	OM1	OM2	V	V	V	V	V	V	V	V	V	
1-1/2"	OM2	OM1	OM3	V	V	V	V	V	V	V	V	V	
2"	OM2	OMA	OM4	V	V	V	V	V	V	V	V	V	
2-1/2"	OM3	BM2											
3"	OM3	BM2											
4"	OM4	-											

- 備註 1.上述氣動及電動器(Actuator)搭配型號及圖形僅供參考，可依客戶需求選用。
2.相關規格資料迎進一步向本公司洽詢。



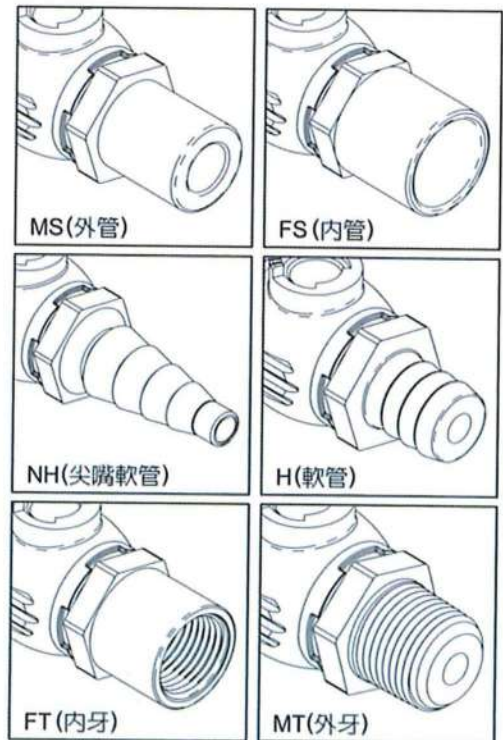
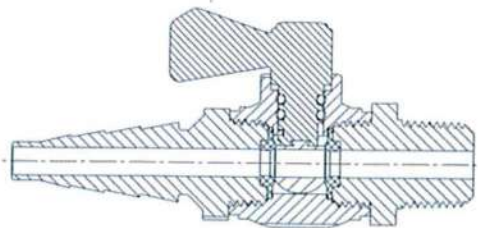
取樣閥

- 材質：PVC、CPVC、PP、PE、PVDF
- 顏色：深灰
- 止水墊：TEFLON(P.T.F.E) / EPDM / VITON / NBR
- O環條：EPDM / NBR

- * 90°C 輕鬆開啟
- * 通用型塑膠凡而可搭配各種施工法做使用。
- * 可依各種需求規格定製，節省大量空間，不佔位。
- * 外牙設計，利於搭配內牙管件使用，節省成本，經濟效益高。
- * 軟管接口，利於搭配軟管使用，節省施工材料成本，經濟效益高。
- * PVC球體、心軸與主體，亦有其他材質可供選擇。
- * EPDM或純VITON的O環可供選擇。
- * 工業用等級，緊密設計。
- * 在溫度22°C的條件下通過225PSI壓力測試。
- * 抗腐蝕耐酸鹼，適用於多種化學液體。
- * 小尺寸軟管接嘴凡而適用於實驗室以及取樣與劑量測的施工。



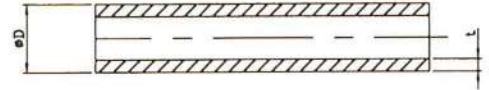
尺寸
1/8"
1/4"
3/8"



● 產品規格

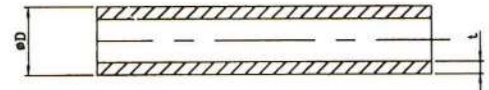
● 管 (Schedule 80) UP系列

Nominal Size	Standard			
	D (mm)	Tolerance	t (min / mm)	Tolerance
1/2"	21.3	+0.10	3.73	+0.51
3/4"	26.7	+0.10	3.91	+0.51
1"	33.4	+0.13	4.55	+0.53
1-1/4"	42.2	+0.13	4.85	+0.58
1-1/2"	48.3	+0.15	5.08	+0.61
2"	60.3	+0.15	5.54	+0.66
2-1/2"	73.0	+0.18	7.01	+0.84
3"	88.9	+0.20	7.62	+0.91
4"	114.3	+0.23	8.56	+1.02
5"	141.3	+0.25	9.52	+1.14
6"	168.3	+0.28	10.97	+1.32
8"	219.1	+0.38	12.70	+1.52
10"	273.1	+0.38	15.06	+1.80
12"	323.9	+0.38	17.45	+2.08
14"	355.6	+0.38	19.05	+2.29
16"	406.4	+0.48	21.41	+2.57
18"	457.2	+0.48	23.80	+2.84
20"	508.0	+0.58	26.20	+3.15
24"	609.6	+0.79	30.94	+3.71



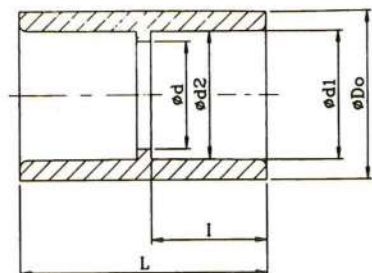
● 管 (Schedule 40) UP40系列

Nominal Size	Standard			
	D (mm)	Tolerance	t (min / mm)	Tolerance
1/2"	21.3	+0.10	2.77	+0.51
3/4"	26.7	+0.10	2.87	+0.51
1"	33.4	+0.13	3.38	+0.51
1-1/4"	42.2	+0.13	3.56	+0.51
1-1/2"	48.3	+0.15	3.68	+0.51
2"	60.3	+0.15	3.91	+0.51
2-1/2"	73.0	+0.18	5.16	+0.61
3"	88.9	+0.20	5.49	+0.66
4"	114.3	+0.23	6.02	+0.71
5"	141.3	+0.25	6.55	+0.79
6"	168.3	+0.28	7.11	+0.86
8"	219.1	+0.38	8.18	+0.99
10"	273.1	+0.38	9.27	+1.12
12"	323.9	+0.38	10.31	+1.24



● 直接頭 (SxS) US系列

Nominal Size	Outside Dia Do	Socket Type			Structural Diameter	
		d1	d2	l	d	L
1/2"	29	21.54	21.23	24.22	16	52
3/4"	35	26.87	26.57	27.40	22	60
1"	44	33.66	33.27	30.58	28	65
1-1/4"	54	42.42	42.04	34.75	35	75
1-1/2"	60	48.56	48.11	37.93	43	80
2"	73	60.63	60.17	41.10	54	88
2-1/2"	88	73.38	72.85	47.45	65	100
3"	105	89.31	88.70	50.63	80	108
4"	132	114.80	114.10	60.15	100	126
5"	162	141.81	141.05	69.68	134	160
6"	191	168.83	168.00	79.20	144	169
8"	246	219.84	218.69	104.60	200	220
10"	304	273.81	272.67	130.00	240	270
12"	360	324.61	323.47	155.00	290	320

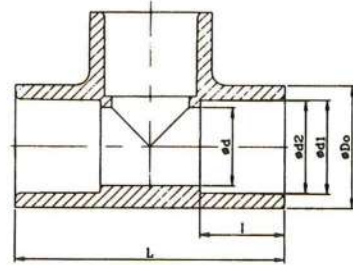


備註 1.S 表示平口，T 表示牙口。

2.14"以上各種新規格尺寸之接頭產品陸續開發中，歡迎直接向本公司洽詢。

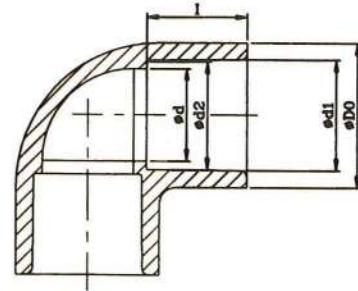
●三通 (SxSxS) UT系列

Nominal Size	Outside Dia Do	Socket Type			Structural Diameter	
		d1	d2	l	d	L
1/2"	29	21.54	21.23	24.22	16	74.44
3/4"	35	26.87	26.57	27.40	22	84.40
1"	44	33.66	33.27	30.58	28	97.16
1-1/4"	54	42.42	42.04	34.75	35	115.50
1-1/2"	60	48.56	48.11	37.93	43	127.90
2"	73	60.63	60.17	41.10	54	146.20
2-1/2"	88	73.38	72.85	47.45	65	172.90
3"	105	89.31	88.70	50.63	80	194.30
4"	132	114.80	114.10	60.15	100	238.30
5"	162	141.81	141.05	69.68	134	298
6"	191	168.83	168.00	79.20	150	336.40
8"	246	219.84	218.69	104.60	200	439.20
10"	304	273.81	272.67	130.00	240	550.00
12"	360	324.61	323.47	155.00	290	600.00



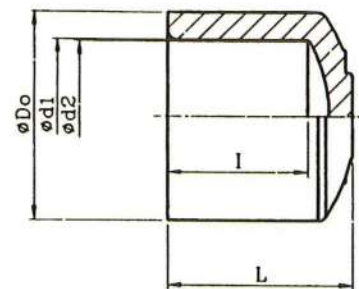
●90彎頭 (SxS) UE90系列

Nominal Size	Outside Dia Do	Socket Type			Structural Diameter d
		d1	d2	l	
1/2"	29	21.54	21.23	24.22	16
3/4"	35	26.87	26.57	27.40	22
1"	44	33.66	33.27	30.58	28
1-1/4"	54	42.42	42.04	34.75	35
1-1/2"	60	48.56	48.11	37.93	43
2"	73	60.63	60.17	41.10	54
2-1/2"	88	73.38	72.85	47.45	65
3"	105	89.31	88.70	50.63	80
4"	132	114.80	114.10	60.15	100
5"	162	141.81	141.05	69.60	134
6"	191	168.83	168.00	79.20	150
8"	246	219.84	218.69	104.60	200
10"	304	273.81	272.67	130.00	240
12"	360	324.61	323.47	155.00	290



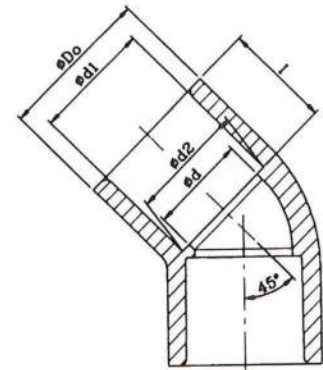
●管帽 UC系列

Nominal Size	Outside Dia Do	Socket Type			Structural Diameter L
		d1	d2	l	
1/2"	30.00	21.54	21.23	24.22	31.10
3/4"	36.83	26.87	26.57	27.40	35.20
1"	45.50	33.66	33.27	30.58	40.50
1-1/4"	55.00	42.42	42.04	34.75	46.06
1-1/2"	61.50	48.56	48.11	37.93	50.33
2"	75.00	60.63	60.17	41.10	56.00
2-1/2"	89.00	73.38	72.85	47.45	65.50
3"	106.00	89.31	88.70	50.63	70.00
4"	133.00	114.80	114.10	60.15	82.26
6"	192.00	168.83	168.00	79.20	110.32
8"	246.00	219.84	218.69	104.60	142.94



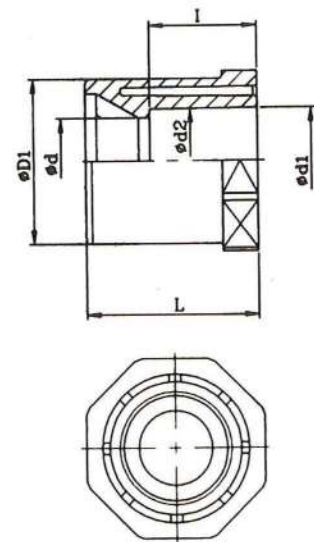
● 45°彎頭 (SxS) UE45系列

Nominal Size	Outside Dia Do	Socket Type			Structural Diameter d
		d1	d2	l	
1/2"	29	21.54	21.23	24.22	16
3/4"	35	26.87	26.57	27.40	22
1"	44	33.66	33.27	30.58	28
1-1/4"	54	42.42	42.04	34.75	35
1-1/2"	60	48.56	48.11	37.93	43
2"	73	60.63	60.17	41.10	54
2-1/2"	88	73.38	72.85	47.45	65
3"	105	89.31	88.70	50.63	80
4"	132	114.80	114.10	60.15	100
5"	156	141.81	141.05	69.60	134
6"	191	168.83	168.00	79.20	150
8"	246	219.84	218.69	104.60	200
10"	304	273.81	272.67	130.00	240
12"	360	324.61	323.47	155.00	290



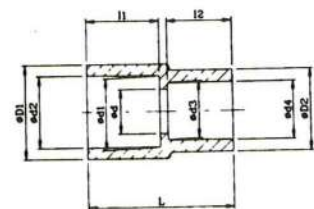
● 異徑接頭 (卜申) (SxS) URB系列

Nominal Size	Outside Dia D1	Socket Type			Structural Diameter	
		d1	d2	l	d	L
1/2"×1/4"	21.34	14.02	13.61	19.00	10	29
1/2"×3/8"	21.34	17.04	17.45	22.00	12	29
3/4"×1/2"	26.67	21.54	21.23	24.00	13	33
1"×3/8"	33.40	17.45	17.04	22.00	12	38
1"×1/2"	33.40	21.54	21.23	24.00	16	38
1"×3/4"	33.40	26.87	26.57	28.00	18	38
1-1/4"×1/2"	42.16	21.54	21.23	24.22	16	44
1-1/4"×3/4"	42.16	26.87	26.57	27.40	22	44
1-1/4"×1"	42.16	33.66	33.27	30.58	28	44
1-1/2"×1/2"	48.26	21.54	21.23	24.22	16	47
1-1/2"×3/4"	48.26	26.87	26.57	27.40	22	47
1-1/2"×1"	48.26	33.66	33.27	30.58	28	47
1-1/2"×1-1/4"	48.26	42.42	42.04	34.75	35	47
2"×1/2"	60.33	21.54	21.23	24.22	16	52
2"×3/4"	60.33	26.87	26.57	27.40	22	52
2"×1"	60.33	33.66	33.27	30.58	28	52
2"×1-1/4"	60.33	42.42	42.04	34.75	35	52
2"×1-1/2"	60.33	48.56	48.11	37.93	43	52
2-1/2"×1-1/2"	73.03	48.56	48.11	37.93	43	60
2-1/2"×2"	73.03	60.63	60.17	41.10	54	60
3"×1-1/2"	88.90	48.56	48.11	37.93	54	60
3"×2"	88.90	60.63	60.17	41.10	54	65
3"×2-1/2"	88.90	73.38	72.85	47.45	65	65
4"×2"	114.30	60.63	60.17	41.10	54	75
4"×2-1/2"	114.30	73.38	72.85	47.45	65	75
4"×3"	114.30	89.31	88.70	50.63	80	75
5"×4"	114.30	114.78	114.07	60.15	100	84
6"×3"	168.28	89.31	88.70	50.60	80	90
6"×4"	168.28	114.76	114.07	60.15	100	90
6"×5"	168.28	141.81	141.04	69.66	125	90
8"×6"	219.10	168.83	168.00	79.00	150	120
10"×3"	273.05	89.31	88.70	50.60	80	148
10"×4"	273.05	114.76	114.07	105.00	105	148
10"×6"	273.05	168.83	168.00	79.00	150	148
10"×8"	273.05	219.84	218.69	105.00	200	148
12"×8"	323.85	223.81	222.89	105.00	200	175
12"×10"	323.85	273.81	272.67	130.00	250	175



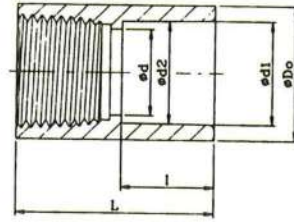
● 異徑直接頭 (SxS) URS系列

Nominal Size	Outside Dia		Socket Type				Structural Diameter			
	D1	D2	d1	d2	l1	d3	d4	l2	d	L
3/4"×1/2"	35.0	30.5	26.57	26.87	27.40	21.23	21.54	24.22	16.5	54.5
1"×1/2"	44.0	30.5	33.27	33.66	30.58	21.23	21.54	24.22	16.5	58.0
1"×3/4"	44.0	35.0	33.27	33.66	30.58	26.57	26.87	27.40	20.5	61.0
1-1/4"×1"	54.0	44.0	42.04	42.42	34.75	33.27	33.66	30.58	28.0	68.0
1-1/2"×1"	60.0	44.0	48.11	48.56	37.93	33.27	33.66	30.58	28.0	71.0
1-1/2"×1-1/4"	60.0	54.0	48.11	48.56	37.93	42.04	42.42	34.75	35.0	75.5
2"×1"	73.0	44.0	60.17	60.63	41.10	33.27	33.66	30.58	28.0	74.5
2"×1-1/2"	73.0	60.0	60.17	60.63	41.10	48.11	48.56	37.93	42.5	82.0



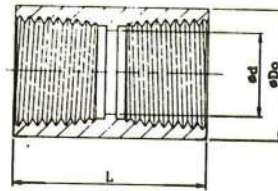
●直龍口 (SxT) UFA系列

Nominal	Outside Dia	Socket Type			Structural Diameter		
Size	Do	d1	d2	l	d	L	NPT(牙/吋)
1/2"	29	21.54	21.23	24.22	16	52	14
3/4"	35	26.87	26.57	27.40	22	60	14
1"	44	33.66	33.27	30.58	28	65	11.5
1-1/4"	54	42.42	42.04	34.75	35	78	11.5
1-1/2"	60	48.56	48.11	37.93	43	80	11.5
2"	73	60.63	60.17	41.40	54	88	11.5



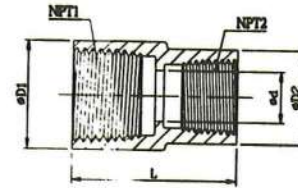
●直接頭 (TxT) UST系列

Nominal	Outside Dia	Structural Diameter		
Size	Do	d	l	NPT(牙/吋)
1/2"	29	16	52	14
3/4"	35	22	60	14
1"	44	28	65	11.5
1-1/4"	54	35	78	11.5
1-1/2"	60	43	80	11.5
2"	73	54	88	11.5



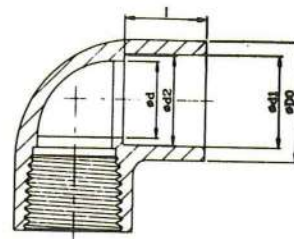
●異徑直接頭 (TxT) URST系列

Nominal	Socket Type		Structural Diameter			
Size	D1	D1	d	L	NPT1	NPT2
1" x 3/4"	44	35	20.5	61	11.5	14



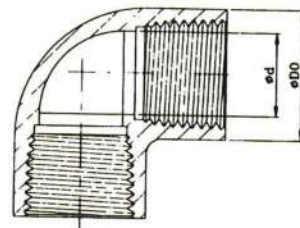
●90龍口 (SxT) ULT系列

Nominal	Outside Dia	Socket Type			Structural Diameter	
Size	Do	d1	d2	l	d	NPT(牙/吋)
1/2"	29	21.54	21.23	24.22	16	14
3/4"	35	26.87	26.57	27.40	22	14
1"	44	33.66	33.27	30.58	28	11.5
1-1/4"	54	42.42	42.04	34.75	35	11.5
1-1/2"	60	48.56	48.11	37.93	43	11.5
2"	73	60.63	60.17	41.10	54	11.5



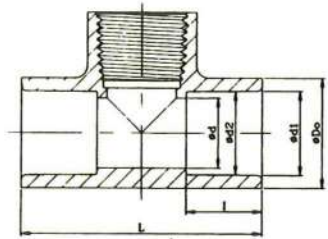
●90彎頭 (TxT) ULTT系列

Nominal	Outside Dia	Structural Diameter	
Size	Do	d	NPT(牙/吋)
1/2"	29	16	14
3/4"	35	22	14
1"	44	28	11.5
1-1/4"	54	35	11.5
1-1/2"	60	43	11.5
2"	73	54	11.5



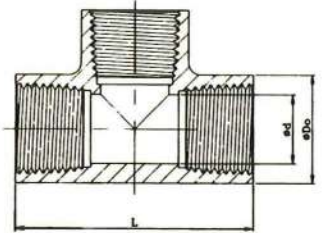
●三通龍口 (SxTxS) UT系列

Nominal Size	Outside Dia Do	Socket Type			Structural Diameter		
		d1	d2	l	d	L	NPT(牙/吋)
1/2"	29	21.54	21.23	24.22	16	74.44	14
3/4"	35	26.87	26.57	27.40	22	84.40	14
1"	44	33.66	33.27	30.58	28	97.16	11.5
1-1/4"	54	42.42	42.04	34.75	35	115.50	11.5
1-1/2"	60	48.56	48.11	37.93	43	127.90	11.5
2"	73	60.63	60.17	41.10	54	146.20	11.5



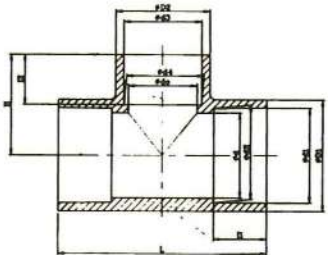
●三通 (TxTxT)

Nominal Size	Outside Dia Do	Structural Diameter		
		d	L	NPT(牙/吋)
1/2"	29	16	74.44	14
3/4"	35	22	84.40	14
1"	44	28	97.16	11.5
1-1/4"	54	35	115.50	11.5
1-1/2"	60	43	127.90	11.5
2"	73	54	146.20	11.5



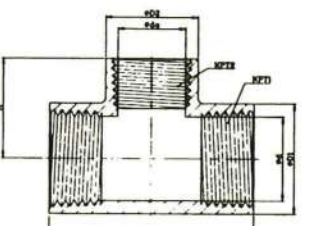
●異徑三通 (SxSxS) URT系列

Nominal Size	Outside Dia		Socket Type						Structural Diameter		
	D1	D2	d1	d2	l1	d3	d4	l2	L	d	do
3/4"×3/4"×1/2"	35	30.5	26.87	26.57	27.40	21.54	21.23	24.22	85.0	22.0	16.5
1"×1"×1/2"	44	30.5	33.66	33.27	30.58	21.54	21.23	24.22	96.0	28.0	16.5
1"×1"×3/4"	44	35.0	33.66	33.27	30.58	26.87	26.57	27.40	96.0	28.0	22.0
1-1/4"×1-1/4"×1"	54	44.0	42.42	42.04	34.75	33.66	33.27	30.58	115.5	35.0	28.0
1-1/2"×1-1/2"×1"	60	44.0	48.56	48.11	37.93	33.66	33.27	30.58	128.0	41.0	28.0
1-1/2"×1-1/2"×1-1/4"	60	54.0	48.56	48.11	37.93	42.42	42.04	34.75	128.0	41.0	35.0
2"×2"×1/2"	75	30.5	60.63	60.17	41.10	21.54	21.23	24.22	146.0	51.5	16.5
2"×2"×3/4"	75	35.0	60.63	60.17	41.10	26.87	26.57	27.40	146.0	51.5	22.0
2"×2"×1"	75	44.0	60.63	60.17	41.10	33.66	33.27	30.58	146.0	51.5	28.0
2"×2"×1-1/4"	75	54.0	60.63	60.17	41.10	42.42	42.04	34.75	146.0	51.5	35.0
2"×2"×1-1/2"	75	60.0	60.63	60.17	41.10	48.56	48.11	37.93	146.0	51.5	43.0
2-1/2"×2-1/2"×1"	89	54.0	73.38	72.85	47.45	33.66	33.27	30.58	171.0	65.0	28.0
2-1/2"×2-1/2"×1-1/2"	89	60.0	73.38	72.85	47.45	48.56	48.11	37.93	171.0	65.0	43.0
2-1/2"×2-1/2"×2"	89	73.0	73.38	72.85	47.45	60.63	60.17	41.10	171.0	65.0	54.0
3"×3"×1"	105	44.0	89.31	88.70	50.63	33.66	33.27	30.58	197.0	80.0	28.0
3"×3"×1-1/2"	105	60.0	89.31	88.70	50.63	48.56	48.11	37.93	197.0	80.0	43.0
3"×3"×2"	105	73.0	89.31	88.70	50.63	60.63	60.17	41.10	197.0	80.0	54.0
3"×3"×2-1/2"	105	89.0	89.31	88.70	50.63	73.38	72.85	47.45	196.0	80.0	65.0
4"×4"×1"	132	44.0	114.76	114.07	60.15	33.66	33.27	30.58	238.0	100	28.0
4"×4"×1-1/2"	132	44.0	114.76	114.07	60.15	48.56	48.11	37.93	238.0	100	43.0
4"×4"×2"	132	73.0	114.76	114.07	60.15	60.63	60.17	41.10	238.0	100	54.0
4"×4"×3"	132	105.0	114.76	114.07	60.15	89.31	88.71	50.63	238.0	100	80.0
6"×6"×2"	191	74.0	168.83	168.00	79.20	60.63	60.17	41.10	338.0	150	54.0
6"×6"×4"	191	132.0	168.83	168.00	79.20	114.76	114.07	60.15	338.0	150	100
8"×8"×2"	248	74.0	219.84	218.70	104.60	60.63	60.17	41.10	439.0	200	54.0
8"×8"×3"	248	105.0	219.84	218.70	104.60	89.30	88.70	50.63	439.0	200	80.0
8"×8"×4"	248	105.0	219.84	218.70	104.60	114.76	114.07	60.15	439.0	200	100
8"×8"×6"	248	191.0	219.84	218.70	104.60	168.83	168.00	79.20	439.0	200	150
10"×10"×3"	307	107.0	273.81	272.67	130.00	89.31	88.31	50.60	560.0	265	80.0
10"×10"×4"	307	134.0	273.81	272.67	130.00	114.76	114.07	60.20	560.0	265	100
10"×10"×6"	307	193.0	273.81	272.67	130.00	168.83	168.00	79.20	560.0	265	160
10"×10"×8"	307	248.0	273.81	272.67	130.00	219.84	218.69	104.4	560.0	265	210
12"×12"×4"	364	136.0	324.60	323.50	155.00	114.76	114.07	60.20	660.0	315	100
12"×12"×6"	364	195.0	324.60	323.50	155.00	168.83	168.00	79.20	660.0	315	160
12"×12"×8"	364	248.0	324.60	323.50	155.00	219.84	218.69	104.4	660.0	315	210
12"×12"×10"	364	308.0	324.60	323.50	155.00	273.81	272.67	130.0	660.0	315	265



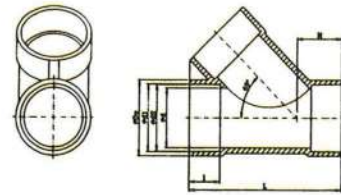
●異徑三通 (TxTxT)

Nominal Size	Socket Type		Structural Diameter				
	D1	D2	L	d	do	NPT1	NPT2
1-1/2"×1-1/2"×1"	60	44	128	41	28	11.5	11.5



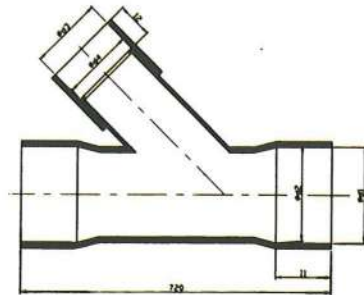
● Y三通 (45°, SxSxS) UYT系列

Size	Outside Dia	Socket Type			Structural Diameter		
Size	Do	d1	d2	l	d	H	L
3"	106	89.31	88.7	49	74	68	222
4"	132	114.76	114.07	59	100	83	277
6"	191	168.83	168	79	150	114	393
8"	246	219.84	218.69	104.6	200	166	567



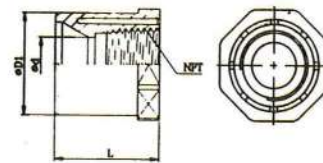
● 異徑Y三通 (45°, SxSxS) URYT系列

Size	L	d1	d2	l1	d3	d4	l2
8"×8"×6"	720	219.84	218.69	130	168.83	168.00	79.2
8"×8"×4"	620	219.84	218.69	130	114.76	114.07	60.15
8"×8"×3"	580	219.84	218.69	130	89.31	88.70	50.63
8"×8"×2"	560	219.84	218.69	130	60.63	60.17	41.1
8"×8"×1"	520	219.84	218.69	130	33.66	33.27	30.58
10"×10"×8"	840	373.81	372.67	130	219.84	218.69	130
10"×10"×6"	720	373.81	372.67	130	168.83	168.00	79.2
10"×10"×4"	640	373.81	372.67	130	114.76	114.07	60.15
10"×10"×3"	620	373.81	372.67	130	89.31	88.70	50.63
10"×10"×2"	560	373.81	372.67	130	60.63	60.17	41.10
10"×10"×1"	520	324.6	372.67	130	33.66	33.27	30.58
12"×12"×10"	960	324.6	323.5	155	373.81	372.67	130
12"×12"×8"	880	324.6	323.5	155	219.84	218.69	130
12"×12"×6"	860	324.6	323.5	155	168.83	168.00	79.2
12"×12"×4"	740	324.6	323.5	155	114.76	114.07	60.15
12"×12"×3"	700	324.6	323.5	155	89.31	88.70	50.63
12"×12"×2"	640	324.6	323.5	155	60.63	60.17	41.1
12"×12"×1"	600	324.6	323.5	155	33.66	33.27	30.58



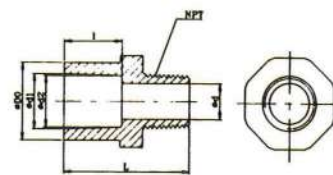
● 異徑接頭 (卜申)(SxT) URBS系列

Nominal	Outside Dia	Structural Diameter		
Size	D1	d	L	NPT(牙/吋)
1/2"×1/4"	21.34	10	29	18
1/2"×3/8"	21.34	12	29	18
3/4"×1/2"	26.67	13	33	14
1"×3/8"	33.40	12	38	18
1×1/2"	33.40	16	38	14
1×3/4"	33.40	18	38	14



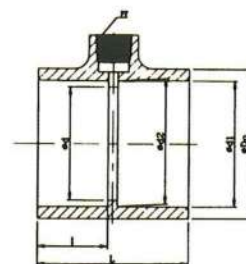
● 外牙接頭 (閥接頭, NPT) (SxT) UMA系列

Nominal	Outside Dia	Socket Type			Structural Diameter		
Size	Do	d1	d2	l	d	L	NPT(牙/吋)
1/2"	30.5	21.54	21.23	24.22	14	50	14
3/4"	35	26.87	26.57	27.40	19	50	14
1"	44	33.66	33.27	30.58	24	59	11.5
1-1/4"	54	42.42	42.04	34.75	32	61	11.5
1-1/2"	60	48.56	48.11	37.93	38	72	11.5
2"	73	60.63	60.17	41.10	50	77	11.5
2-1/2"	88	73.38	72.85	47.45	61	97	8
3"	105	89.31	88.70	50.63	73	104	8
4"	132	114.80	114.10	60.15	96	116	8



● 儀表三通 (SxTxS) URT系列

Nominal	Outside Dia	Socket Type			Structural Diameter		
Size	Do	d1	d2	l	d	L	PT(牙/吋)
3"×1/2"T	105	89.31	88.70	50.63	80	194.3	14
3"×3/4"T	105	89.31	88.70	50.63	80	194.3	14
4"×1/2"T	132	114.80	114.10	60.15	100	238.3	14
4"×3/4"T	132	114.80	114.10	60.15	100	238.3	14
6"×1/2"T	191	168.83	168.00	79.20	150	336.4	14
6"×3/4"T	191	168.83	168.00	79.20	150	336.4	14
8"×1/2"T	246	219.84	218.96	104.6	200	439.2	14
8"×3/4"T	246	219.84	218.96	104.6	200	439.2	14



透明管件 · 品質看得見

金順億科技所生產之CLEAR PVC透明管及配件，為品質良好之台灣產品。採用台灣原料在地生產，並經不斷測試及改良，力求提供最好品質及服務。

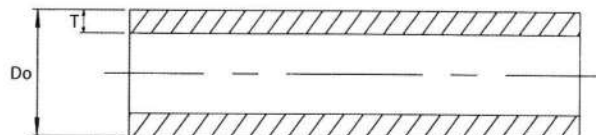
CLEAR PVC透明管請勿安裝在直接日曬環境，若需安裝於室外，應給予適當遮蔽。在運送或存放透明管時，需特別注意，請給予適當覆蓋，避免因陽光直射造成透明管變形。



● 產品規格

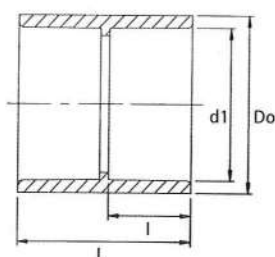
● CLEAR PVC透明管規格(mm)

尺寸	外徑(Do)	公差(+/-)	最小外徑	最大外徑	厚度(T)	公差(+/-)	最小厚度	最大厚度
1/2"	21.34	0.15	21.19	21.49	2.77	0.51	2.26	3.28
3/4"	26.67	0.15	26.52	26.82	2.87	0.51	2.36	3.38
1"	33.40	0.18	33.22	33.58	3.15	0.51	2.64	3.66
1-1/4"	42.16	0.18	41.98	42.34	3.21	0.51	2.70	3.72
1-1/2"	48.26	0.20	48.06	48.46	3.45	0.51	2.94	3.96
2"	60.33	0.20	60.13	60.53	3.52	0.61	2.91	4.13
2-1/2"	73.03	0.20	72.83	73.23	4.39	0.61	3.78	5.00
3"	88.90	0.23	88.67	89.13	5.00	0.66	4.34	5.66
4"	114.30	0.33	113.97	114.63	5.18	0.71	4.46	5.89
6"	168.28	0.45	167.83	168.73	5.89	1.20	4.69	7.09



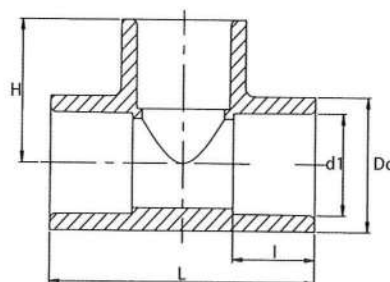
● CLEAR PVC透明平接規格(mm)

尺寸	Do	d1	l	L
1/2"	29.00	21.70	24.40	52.25
3/4"	35.00	27.00	28.00	60.40
1"	39.70	33.70	29.30	60.50
1-1/2"	56.00	48.30	33.00	68.30
2"	68.20	60.45	34.65	72.20
2-1/2"	81.50	73.50	46.20	95.20
3"	100.80	89.50	49.00	101.80
4"	127.50	114.80	52.00	108.00



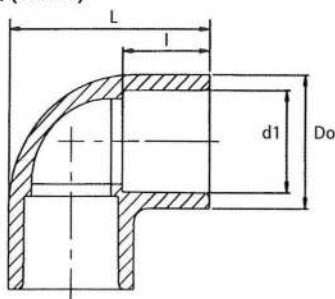
● CLEAR PVC透明正三通規格(mm)

尺寸	Do	d1	l	L	H
1/2"	29.20	21.40	25.00	75.30	37.00
3/4"	35.30	26.80	27.70	84.70	42.15
1"	44.30	33.55	31.40	98.00	49.00
1-1/2"	60.35	48.50	37.40	128.50	64.00
2"	75.00	60.63	38.10	146.00	73.00
2-1/2"	88.30	73.80	48.00	173.40	86.40
3"	105.50	89.30	51.30	195.25	97.40
4"	135.00	114.76	57.15	239.00	119.50



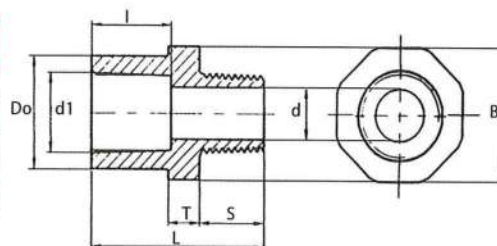
● CLEAR PVC透明90°彎頭規格(mm)

尺寸	Do	d1	l	L
1/2"	29.15	21.50	24.40	55.25
3/4"	35.30	26.90	28.00	60.50
1"	44.40	33.60	31.30	72.30
1-1/2"	60.40	48.45	38.50	95.00
2"	73.60	60.60	41.75	111.00
2-1/2"	88.45	73.40	48.00	132.00
3"	106.20	89.60	51.60	152.00
4"	133.50	114.90	61.00	188.50



● CLEAR PVC透明外牙規格(mm)

尺寸	Do	d1	l	L	B	T	S	d
1/2"	30.75	21.50	24.55	49.15	36.00	8.00	18.50	13.80
3/4"	35.25	26.80	27.85	50.45	41.15	8.30	19.00	19.30
1"	44.50	33.55	31.10	59.20	50.50	9.40	21.00	23.60
1-1/2"	60.60	48.65	37.60	72.55	65.50	9.40	27.50	37.60
2"	73.50	60.50	40.00	77.15	80.50	10.20	27.70	49.00



幣別：台幣
(currency:TWD)



● 梅花螺絲(PP/PVC) * 英制粗牙(W)

規格	W3/8"(3分)	W1/2"(4分)	W5/8"(5分)	W3/4"(6分)
牙距	P16	P12	P11	P10
牙長mm	35mm	35mm	35mm	35mm
螺母牌價	*	*	*	*
20mm		*		
30mm			*	*
35mm	*	*	*	*
50mm	*	*	*	*
65mm	*	*	*	*
80mm	*	*	*	*
95mm	*	*	*	*



● 異徑三通(套接)(PP)

大邊規格	小邊規格	1/2"	3/4"	1"	1-1/4"	1-1/2"	2"
厚度mm		*	*	*	*	*	
3/4"		*					
1"		*	*				
1-1/4"		*	*	*			
1-1/2"		*	*	*			
2"		*	*	*	*	*	
2-1/2"							*
3"							*



● 法蘭彎頭(套接)(PP)

尺寸 / 規格	1-1/2"	2"
管內徑mm	48	60
管厚度mm	17	19



● 外牙閥接頭(套接)(PP)

尺寸 / 規格	歐規									
	1/2"	3/4"	1"	1-1/4"	1-1/2"	2"	2-1/2"	3"	1-1/2"	2"
管內徑mm	22	27	34	42	48	60	76	89	50	63
管厚度mm	4.1	4.5	4.9	5.7	6.7	6.4	6.5	6.8	6.8	8.7



● 正四通(套接)(PP)

尺寸 / 規格	3/4"	1"	1-1/2"	2"
管內徑mm	27	34	48	60
管厚度mm	4.3	4.8	4.8	6



● 雙外牙接頭(PP)

尺寸 / 規格	1/2"	3/4"	1"
管內徑mm	22	27	34
管厚度mm			



● 大小直接頭(短型)外徑(對接)內徑(套接)(PP)

大邊規格	小邊規格	1/2"	3/4"	1"	1-1/4"	1-1/2"	2"	2-1/2"	3"	4"	5"	6"	8"
3/4"		*											
1"		*	*										
1-1/4"		*	*	*									
1-1/2"		*	*	*	*								
2"		*	*	*	*	*							
2-1/2"						*	*						
3"						*	*	*					
4"						*	*	*	*				
5"									*	*			
6"										*	*		
8"											*	*	
10"													*



●大小直接頭(短型)外徑(對接)內徑(套接)(PP)

大邊規格	小邊規格	1/2"	3/4"	1"	1-1/4"	1-1/2"	2"
厚度mm							
1-1/2"							
2"							



●45° 固定座(PP/PVC)

尺寸 / 規格	1/2"	3/4"	1"	1-1/2"	2"
管內徑mm	22	27	34	48	60
管厚度mm	16	17	18	19	20



●向上固定座(PP/PVC)

尺寸 / 規格	1/2"	3/4"	1"	1-1/2"	2"	2-1/2"
管內徑mm	22	27	34	48	60	76
管厚度mm	16	17	18	19	20	20



●水甕加長型(濾管外牙)(PP)

尺寸 / 規格	1-1/2"	2-1/2"	4"
管內徑mm	48	76	114
管厚度mm	5	5	7



●外牙閥接頭(對接/套接)/濾管用大異內徑內牙(對接)(PP)

材質	材質	尺寸/規格	厚度
PP	外牙閥接頭	1-1/2"套接內徑50mm米灰色	6.8mm
PP	外牙閥接頭	2"對接內徑63mm米灰色	8.7mm
PP	外牙閥接頭	2"套接內徑63mm米灰色	8.7mm
PP	大異徑內牙	2-1/2"PT內牙x2"(60mm對接)	
PP	大異徑內牙	4"PT內牙x3"(89mm對接)	



●皿字型十字(皆全牙)(PP/PVC) * 公制粗牙(M)

規格 牙距	M5		M6		M8		M10	
	全長 mm	螺絲 長度 mm	全長 mm	螺絲 長度 mm	全長 mm	螺絲 長度 mm	全長 mm	螺絲 長度 mm
	P0.8		P1.0		P1.25		P1.5	
	20		25		25		30	
螺母牌價	*	*	*	*	*	*	*	*
PP-PVC材質	PVC	PP	PVC	PP	PVC	PP	PVC	PP
20mm	*	*	-	-	-	-	-	-
25mm	-	-	*	*	*	*	-	-
30mm	-	-	-	-	-	-	*	*



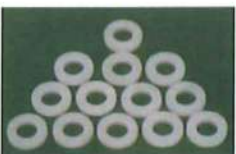
●圓頭內六角(PP/PVC) * 公制粗牙(M)

規格 牙距	M8							
	全長 mm	螺絲 長度 mm	全長 mm	螺絲 長度 mm	全長 mm	螺絲 長度 mm	全長 mm	螺絲 長度 mm
	P1.25							
	皆全牙							
螺母牌價								
PP-PVC材質	PVC	PP						
25mm	*	*						
30mm	*	*						



●圓頭十字(皆全牙)(PP/PVC) * 公制粗牙(M)

規格 牙距	M3		M4		M5		M6	
	全長 mm	螺絲 長度 mm	全長 mm	螺絲 長度 mm	全長 mm	螺絲 長度 mm	全長 mm	螺絲 長度 mm
	P0.5		P0.7		P0.8		P1.0	
	15		15		15/20/25		20/25	
螺母牌價					*	*	*	*
PP-PVC材質	PVC	PP	PVC	PP	PVC	PP	PVC	PP
15mm	*	*	*	*	*	*	-	-
20mm	-	-	-	-	*	*	*	*
25mm	-	-	*	*	*	*	*	*



●塑膠華司射出成型(PP/PVC) * 公制粗牙(M)

尺寸 / 規格	M5	M6	M8	M10	M12	M16	M20
內徑mm	3/16"	1/4"	5/16"	3/8"	1/2"	5/8"	3/4"



● 90° 大月彎(對接) (PP)

日規尺寸 / 規格	1"	1-1/2"	2"	3"	4"	6"	8"	10"	12"
管內徑mm	34	48	60	89	114	165	216	267	318
管厚度mm	3	4	4.5	4	5	5.5	6	6	6.5
歐規尺寸 / 規格						6"	8"	10"	12"
管內徑mm						160	200	250	315
管厚度mm						1200	1500	1800	2256

* 日規是套接，歐規是對接



● 三通(套接) (PP)

尺寸 / 規格	1/2"	3/4"	1"	1-1/4"	1-1/2"	2"	2-1/2"	3"	4"	5"	6"
管內徑mm	22	27	34	42	48	60	76	89	114	140	165
管厚度mm	4.3	4.3	4.3		7.2	7.6	5.1	5.1	5.2	5	5



● 異徑四通(套接)(PP)

大邊規格	小邊規格	1/2"	3/4"	1"	1-1/4"	1-1/2"
厚度mm			*	*	*	*
3/4"		*				
1"		*	*			
1-1/4"		*	*	*		
1-1/2"		*	*	*	*	
2"		*	*	*	*	*



● 內外牙彎頭(PP)

日規尺寸 / 規格	1/2"	3/4"	1"
管內徑mm	22	27	34
管厚度mm	3.5	4.3	4.7



● 內牙接頭(套接) (PP/PVC)

規格	真徑內牙								
	1/2"(22mm)x3/8"內牙	1/2"	3/4"	1"	1-1/2"	2"	2-1/2"	3"	4"
內徑mm	1/2"(22mm)x1/4"內牙	26.4	32.4	40.8	57.6	72	91.2	106.8	136.8
PP牌價	31.2	31.2	31.2	43.2	60	120	168	228	288
PVC牌價	*	*				*	*		



● 內牙接頭(套接)(PP/PVC)

尺寸 / 規格	產品名稱	尺寸
PP/PVC	小外牙接頭	1/2"(厚度3mm)x3/8"牙(厚度10mm)
PP/PVC	小外牙接頭	1/2"(厚度2.5mm)x1/4"牙(厚度7.7mm)
PP	L型PT牙接頭	1/2"插管邊x3/8"外牙邊
PP	L型PT牙接頭	3/8"插管邊x1/4"外牙邊



● 外牙凸六角塞頭(PP)

尺寸 / 規格	1/2"	3/4"	1"	1-1/4"	1-1/2"	2"	2-1/2"	3"	4"
管內徑mm	22	27	34	42	48	60	76	89	114
管厚度mm									



● 外牙平面塞頭、卜伸(一邊外牙)(一邊內牙)(PP/PVC)

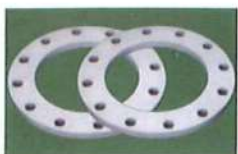
尺寸 / 規格	產品名稱	規格	尺寸
PP/PVC	外牙塞頭	日規	1/8"PT牙(1分)米灰色
PP/PVC	外牙塞頭	日規	1/4"PT牙(2分)米灰色
PP/PVC	外牙塞頭	日規	3/8"PT牙(3分)米灰色
PP/PVC	外六角卜伸	日規	3/8"外牙x1/4"牙色
PP/PVC	外六角卜伸	日規	1/2"外牙x3/8"牙色



● 焊接抽風法蘭(套接) (PP)

尺寸 / 規格	4"	6"	8"	10"	12"
管內徑mm	114	165	216	267	318
管厚度mm	6.5				

* 焊接抽風式法蘭4"一體射出成型(套接)6"以上手工製



● 法蘭片(PP)

尺寸 / 規格	1"	1-1/2"	2"	2-1/2"	3"
管內徑mm	34	48	60	76	89
管厚度mm	16	17	18	19	20

* 中空平面式10K法蘭片一體射出成型(套接)



● 同徑接頭(平接頭套接) (PP)

日規尺寸 / 規格	1"	1-1/4"	1-1/2"	2"	2-1/2"	3"	4"
管內徑mm	34	42	48	60	76	89	114
管厚度mm	4.5	4.5	4.9	5.1	5	4.5	5
歐規尺寸 / 規格	2-1/2"	3"	5"	6"	8"	10"	12"
管內徑mm	75	90	140	160	200	250	315
管厚度mm	9	10.5					



● 手動風門開關(套接) (PP)

日規尺寸 / 規格	2"	2-1/2"	3"	4"	5"	6"	8"	10"	12"	
管內徑mm	60	76	89	114	140	165	216	267	318	
管厚度mm	5	5	5	4	4	4	5	5	5	
歐規尺寸 / 規格							6"	8"	10"	12"
管內徑mm							160	200	250	315

* 手動風門開關一體射出成型(套接)



● 內牙彎頭(套接) (PP)

尺寸 / 規格	1/2"	3/4"	1"	1-1/2"	2"
管內徑mm	22	27	34	48	60
管厚度mm	3.5	4.3	4.7		



● 45° 彎頭(風口) (PP)

尺寸 / 規格	1/2"	3/4"	1"	1-1/4"	1-1/2"	2"	2-1/2"	3"	4"	歐規	
										5"	6"
管內徑mm	22	27	34	42	48	60	76	89	114	140	160
管厚度mm				5.8	5.7	7.1	6.3	6.7	6.5	5	5



● 90° 彎頭(套接) (PP)

日規尺寸 / 規格	1/2"	3/4"	1"	1-1/4"	1-1/2"	2"	2-1/2"	3"	4"	5"
管內徑mm	22	27	34	42	48	60	76	89	114	140
管厚度mm	3.6	4.5	2.7	5.4	6.6	7	6.4	6.5	6.5	6.1
歐規尺寸 / 規格	1"	1-1/4"	1-1/2"	2"	2-1/2"	3"				
管內徑mm	32	40	50	63	75	90				
管厚度mm	5.6	6	7	8.7	9	10.5				



● 管帽(塞口套接) (PP)

日規尺寸 / 規格	1"	1-1/4"	1-1/2"	2"	2-1/2"	3"	4"
管內徑mm	34	42	48	60	76	89	114
管厚度mm	4.5	4.5	4.9	5.1	5	4.5	5
歐規尺寸 / 規格	2-1/2"	3"	4"	5"	6"	8"	10"
管內徑mm	75	90	110	140	160	200	250
管厚度mm	9	10.5	11.7	5.4	5.3	5.4	5.2



● 塑膠螺絲螺母 (粗牙外六角一字型螺絲螺母) (PP/PVC)

* 公制粗牙(M)

螺絲 全長 mm	規格		M3		M4		M5		M6		M8		M10		M12		M14		M16		M20	
	牙距 mm	螺絲 長度 mm	P0.5	P0.7	P0.8	P1.0	P1.25	P1.5	P1.75	P2.0	P2.5	P2.0	P2.5	40mm	45mm	45mm	45mm	50mm	50mm	50mm	50mm	
螺絲牌價					*	*	*	*	*	*	*	*	*	*	*	*	*	*	*	*	*	*
PP-PVC材質	PVC	PP	PVC	PP	PVC	PP	PVC	PP	PVC	PP	PVC	PP	PVC	PP	PVC	PP	PVC	PP	PVC	PP	PVC	PP
15mm	*	*	*	*	*	*																
20mm					*	*	*	*	*	*	*	*										
25mm			*	*	*	*	*	*	*	*	*	*										
30mm					*	*			*	*	*	*										
35mm							*	*	*	*	*	*										
40mm					*	*					*	*	*	*								
45mm							*	*	*	*	*	*					*	*	*	*		
50mm					*	*					*	*	*	*							*	*
55mm							*	*	*	*	*	*		*	*							
60mm											*	*				*	*	*	*			
65mm							*	*	*	*	*	*									*	*
70mm											*	*	*	*								*
75mm							*	*	*	*	*	*			*	*	*	*	*			*
80mm											*	*					*	*	*	*		*
85mm													*	*								*
90mm															*	*	*	*	*			*
95mm																					*	*
100mm													*	*								*
105mm															*	*	*	*	*			*
110mm																					*	*
115mm													*	*								*
120mm															*	*	*	*	*			*
125mm																	*	*	*	*	*	*
130mm													*	*							*	*

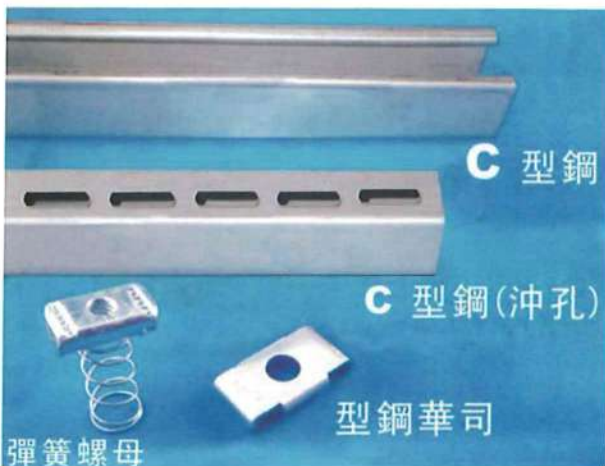
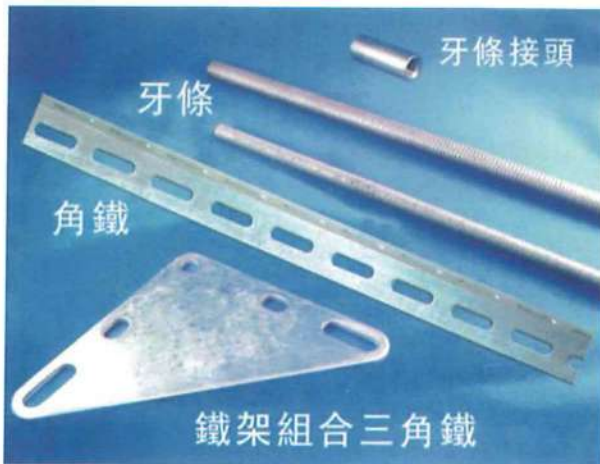
● PP米灰管 PP管(聚丙烯管) PPS防火管(聚丙烯防火管)尺寸規格表

標準管徑IN	外徑mm	近似內徑mm	厚度mm	長度M
1/2"	22	17	2.5	4
3/4"	27	22	2.5	4
1"	34	28	3.0	4
1"	34	26	4.0	4
1-1/4"	42	35	3.5	4
1-1/2"	48	40	4.0	4
1-1/2"	48	36	6.0	4
2"	60	51	4.5	4
2"	60	44	8.0	4
2-1/2"	76	68	4.0	6
2-1/2"	76	60	8.0	6
3"	89	81	4.0	6
3"	89	79	5.0	6
3"	89	73	8.0	6
4"	114	108	3.0	6
4"	114	103	5.5	6
4"	114	98	8.0	6
5"	140	132	4.0	6
5"	140	127	6.5	6
6"	165	157	4.0	6
6"	165	151	7.0	6
8"	216	206	5.0	6
8"	216	200	8.0	6
10"	267	257	5.0	5
10"	267	247	10.0	5
12"	318	308	5.0	5
12"	318	294	12.0	5

* 以實際數量報價為準

PS: HDPE高密度聚乙烯雙層排水浪管、螺旋管、船筏管以及管接頭以上顏色都是黑色管。
PPS聚丙烯防火管屬於訂製品。

備註: 大量訂購可另行議價, 少量訂購需要加收運費。



●不鏽鋼角鐵

規格	實價	支/每件
1-1/2"單孔		
1-1/2"雙孔		
2"單孔		
2"雙孔		

●牙條

電白	實價	白鐵	實價
3/8"		3/8"	
1/2"		1/2"	

●牙條接頭

規格	實價
3/8"	
1/2"	

●P型管條夾

規格	實價	支/每件
EMT19"		
1/2"		
3/4"		
1"		
1-1/4"		
1-1/2"		
2"		
2-1/2"		
3"		
4"		
5"		
6"		

●C型鋼(沖孔)

規格	實價	支/每件
1.2x25x41低		
1.5x25x41低		
1.5x41x41高		
2.0x41x41高		

●C型鋼(白鐵)

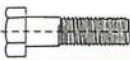
規格	實價	支/每件
1.2x25x41		
1.5x41x41高		
2.0x41x41高		

●C型鋼

規格	實價	支/每件
1.2x25x41低		
1.5x25x41低		
1.5x41x41高		
2.0x41x41高		

●C型鋼(白鐵沖孔)

規格	實價	支/每件
1.2x25x41低		
1.5x41x41高		
2.0x41x41高		

● 不鏽鋼六角頭機械螺絲 

* 每支單價 price/pcs

徑/長	1/2	5/8	3/4	1"	1-1/4	1-1/2	1-3/4	2"	2-1/2	3"	3-1/2	4"	4-1/2	5"	5-1/2
3/16	5.28	5.28	6.24	7.2	8.16	9.6	10.56	11.52	14.4	17.28		5.28	5.28	5.28	5.28
1/4	3.12	3.48	3.84	4.44	5.04	5.76	6.48	7.2	8.88	9.96	11.64	3.12	3.12	3.12	3.12
5/16	5.16	5.76	6.0	7.44	8.52	9.84	11.04	12.12	14.4	16.68	19.32	5.16	5.16	5.16	5.16
3/8	7.8	8.52	9.6	11.16	12.6	14.16	15.96	18.12	21.12	24.72	28.08	7.8	7.8	7.8	7.8
7/16			14.88	17.28	19.56	21.96	24.48	26.64	30.72	37.92	47.04				
1/2			20.64	22.8	25.2	27.96	30.84	34.08	42.96	45.96	52.2				
5/8				39.96	43.2	47.28	51.84	56.4	65.88	74.64	84.12				
3/4						76.8	81.6	90.72	104.04	117.6	132.0				
7/8						142.8	153.6	165.6	187.2	218.4	241.2				
1"								235.2	267.6	303.6	340.8				
1-1/8											624.0				
1-1/4											801.6				

● 不鏽鋼六角頭機械螺絲 

* 每支單價 price/pcs

徑/長	6"	6-1/2	7"	7-1/2	8"	8-1/2	9"	9-1/2	10"	11"	12"	13"	14"	15"	
1/4	25.2														
5/16	38.4														
3/8	51.6	64.8	69.6	74.4	85.2	92.4	96	103.2	118.8	134.4	152.4	326.4	345.6	364.8	
1/2	98.4	105.6	114	121.2	134.4	141.6	151.2	163.2	172.8	200.4	217.2	408	432	456	
5/8	150	166.8	178.8	190.8	196.8	216	228	240	268.8	310.8	356.4	556.8	588	633.6	
3/4	242.4	267.6	282	427.2	324	354	361.2	393.6	393.6	660	700.8	744	792	840	
7/8	376.8	399.6	427.2	442.8	483.6	492	537.6	540	588						
1"	525.6	550.8	577.2	618	660	703.2	733.2	772.8	811.2						
1-1/8	926.4	960	1027.2	1092	1152										織造品
1-1/4	1176	1236	1310.4	1392	1464										織造品

● 不鏽鋼六角頭螺帽 

* 每支單價 price/pcs

品名/規格	1/8	5/32	3/16	1/4	5/16	3/8	7/16	1/2	5/8	3/4	7/8	1"
#304材質	1.08	1.08	1.08	1.32	2.28	3.72	6.48	8.64	15.84	24.24	52.8	80.4
#316材質			2.4	3.24	5.28	7.32	15.96	18.36	36	57.6	105.6	153.6
重型(大型)				6.12	6.48	8.16	12	19.56	36	57.6	96	157.2
#316重型					14.4	21.6	24	33.6	57.6	100.8	163.2	244.8

品名/規格	1-1/8	1-1/4	1-3/8	1-1/2	1-5/8	1-3/4	1-7/8	2"
#304材質	212.4	277.2	306	460.8	720	888	1056	1332
#316材質	416.4	550.8	771.6	967.2	1224	1448.4	1938	2142
重型(大型)	224.4	300	387.6	489.6	652.8	795.6	938.4	1224
#316重型	348	456	600	756	1176	1224	1440	1800

← 織造品 Forging →

* 每支單價 price/pcs

品名/規格	M2	M3	M4	M5	M6	M8	M10	M12	M14	M16	M18	M20
#304材質	1.44	1.08	1.08	1.08	1.32	2.64	6	8.52	14.4	17.04	28.8	32.64
#316材質		2.04	2.04	2.04	2.4	5.16	11.04	16.08	27.6	31.68	55.2	61.2
重型(大型)							11.04	15.96	30	36	60	72
#316重型							24	32.4	60	72	120	144

品名/規格	M22	M24	M27	M30	M33	M36
#304材質	48	72	159.6	177.6	244.8	326.4
#316材質	90	156	428.4	448.8	673.2	1162.8
重型(大型)	96	144	180	276	336	456
#316重型	192	258	420	456	672	912

← 織造品 Forging →

**Verification Testing Laboratory
Analysis/Test Report**

Application No: 100A011-J11269
Date Tested: 2011/12/08-2011/12/09

Item(s)/ Method(s)	Result(s)	Note												
1. Short-Time Hydraulic Pressure Product Test	122 kgf													
2. Falling Mass Impact Test Product Test	No crack phenomenon on the sample surface is observed with the naked eye after test.													
3. Density ASTM D792	<table border="1"> <thead> <tr> <th colspan="2">Density (g/cm³)</th> </tr> </thead> <tbody> <tr><td>#1</td><td>1.34</td></tr> <tr><td>#2</td><td>1.34</td></tr> <tr><td>#3</td><td>1.34</td></tr> <tr><td>Mean</td><td>1.34</td></tr> <tr><td>SD</td><td>---</td></tr> </tbody> </table>	Density (g/cm ³)		#1	1.34	#2	1.34	#3	1.34	Mean	1.34	SD	---	
Density (g/cm ³)														
#1	1.34													
#2	1.34													
#3	1.34													
Mean	1.34													
SD	---													

REMARK:
Conditioning - temperature: 23±2 °C
Conditioning - relative humidity: 50±5 %
Conditioning - time: over 40 hrs
Experimental Condition - temperature: 23±2 °C
Experimental Condition - relative humidity: 50±5 %

1.1 Specimen Preparation Method: Provided by Customer
1.2 The test result is performed from Herbary Valve Co., Ltd to witness test.
1.3 Specimen see attached photo 1 ~ 3
2. Falling Mass Impact Test
2.1 Specimen Preparation Method: Provided by Customer
2.2 Falling Ball Weight: 2 kg
2.3 Falling Ball Height: 1 m
2.4 Falling Ball diameter: 38 mm

4000 中華工業技術發展中心
No. 39, 113 Rd., Taichung Industrial Park, Taichung, Taiwan, R.O.C.
http://www.pidc.org.tw
TEL: (04)2159-5900
FAX: (04)2159-5435

**Verification Testing Laboratory
Analysis/Test Report**

Application No: 100A011-J112870
Date Tested: 2011/12/08-2011/12/09

Item(s)/ Method(s)	Result(s)	Note														
1. Short-Time Hydraulic Pressure Product Test	79.9 kgf															
2. Falling Mass Impact Test Product Test	No crack phenomenon on the sample surface is observed with the naked eye after test.															
3. Tensile Test Product Test	<table border="1"> <thead> <tr> <th colspan="2">Max. Load (kgf)</th> </tr> </thead> <tbody> <tr><td>#1</td><td>223</td></tr> <tr><td>#2</td><td>219</td></tr> <tr><td>#3</td><td>226</td></tr> <tr><td>#4</td><td>219</td></tr> <tr><td>#5</td><td>222</td></tr> <tr><td>Mean</td><td>222</td></tr> </tbody> </table>	Max. Load (kgf)		#1	223	#2	219	#3	226	#4	219	#5	222	Mean	222	
Max. Load (kgf)																
#1	223															
#2	219															
#3	226															
#4	219															
#5	222															
Mean	222															
4. Density ASTM D792	<table border="1"> <thead> <tr> <th colspan="2">Density (g/cm³)</th> </tr> </thead> <tbody> <tr><td>#1</td><td>1.36</td></tr> <tr><td>#2</td><td>1.36</td></tr> <tr><td>#3</td><td>1.36</td></tr> <tr><td>Mean</td><td>1.36</td></tr> <tr><td>SD</td><td>---</td></tr> </tbody> </table>	Density (g/cm ³)		#1	1.36	#2	1.36	#3	1.36	Mean	1.36	SD	---			
Density (g/cm ³)																
#1	1.36															
#2	1.36															
#3	1.36															
Mean	1.36															
SD	---															

REMARK:
Conditioning - temperature: 23±2 °C
Conditioning - relative humidity: 50±5 %
Conditioning - time: over 40 hrs
Experimental Condition - temperature: 23±2 °C
Experimental Condition - relative humidity: 50±5 %

4000 中華工業技術發展中心
No. 39, 113 Rd., Taichung Industrial Park, Taichung, Taiwan, R.O.C.
http://www.pidc.org.tw
TEL: (04)2159-5900
FAX: (04)2159-5435

**Verification Testing Laboratory
Analysis/Test Report**

Application No: 100A011-J112808
Date Tested: 2011/12/08-2011/12/09

Item(s)/ Method(s)	Result(s)	Note														
1. Short-Time Hydraulic Pressure Product Test	122 kgf															
2. Falling Mass Impact Test Product Test	No crack phenomenon on the sample surface is observed with the naked eye after test.															
3. Tensile Test Product Test	<table border="1"> <thead> <tr> <th colspan="2">Max. Load (kgf)</th> </tr> </thead> <tbody> <tr><td>#1</td><td>223</td></tr> <tr><td>#2</td><td>219</td></tr> <tr><td>#3</td><td>226</td></tr> <tr><td>#4</td><td>219</td></tr> <tr><td>#5</td><td>222</td></tr> <tr><td>Mean</td><td>222</td></tr> </tbody> </table>	Max. Load (kgf)		#1	223	#2	219	#3	226	#4	219	#5	222	Mean	222	
Max. Load (kgf)																
#1	223															
#2	219															
#3	226															
#4	219															
#5	222															
Mean	222															
4. Density ASTM D792	<table border="1"> <thead> <tr> <th colspan="2">Density (g/cm³)</th> </tr> </thead> <tbody> <tr><td>#1</td><td>1.34</td></tr> <tr><td>#2</td><td>1.34</td></tr> <tr><td>#3</td><td>1.34</td></tr> <tr><td>Mean</td><td>1.34</td></tr> <tr><td>SD</td><td>---</td></tr> </tbody> </table>	Density (g/cm ³)		#1	1.34	#2	1.34	#3	1.34	Mean	1.34	SD	---			
Density (g/cm ³)																
#1	1.34															
#2	1.34															
#3	1.34															
Mean	1.34															
SD	---															

REMARK:
Conditioning - temperature: 23±2 °C
Conditioning - relative humidity: 50±5 %
Conditioning - time: over 40 hrs
Experimental Condition - temperature: 23±2 °C
Experimental Condition - relative humidity: 50±5 %

4000 中華工業技術發展中心
No. 39, 113 Rd., Taichung Industrial Park, Taichung, Taiwan, R.O.C.
http://www.pidc.org.tw
TEL: (04)2159-5900
FAX: (04)2159-5435

送審專用章

Certificate of Compliance

No. 11170110.Y5Y0091
Technical Construction File no. 5PHJ/WJ/CF1.0/MD

Certificate's Holder: King-Shuen-Yi Technology Co., Ltd.
No. 197-13, Sanshe, Xinshe Dist., Tainan City 744, Taiwan (R.O.C.)

Certification ECM Mark:

Product: Plastic Ball Valves
Model(s): DN 25 to DN 100 (1 to 4 inch)

Verification to: Standard: EN ISO 15493, EN 12266-1
related to CE Directive(s): 2014/68/EU [Pressure Equipment] MODULE A1

Remark: The product(s) has been verified on a voluntary basis. The product(s) satisfies the requirements of the Certification Mark of ECM in reference to the above listed Standard(s). The above Compliance Mark can be affixed on the product(s) accordingly to the ECM regulation about its release and its use. The regulation can be found at www.enfocert.it. This Certificate of Compliance can be checked for validity at www.enfocert.it.
This verification doesn't imply assessment of the production of the product(s).

Additional information, clarification about the CE Marking: We attest that a TCF for the CE Marking process is in place. Whereas the Manufacturer is Responsible to start the CE Marking Certification Procedure through an appointed notified body and the perform all the necessary activities, as required by the Directive and accepted by the Notified body, before placing the CE Mark on the product(s).

Date of issue 10 January 2017
Chief Manager:

Expiry date 09 January 2022
Deputy Manager:

Ente Certificazione Macchine Srl
Via Ca' Bella 243 - Loc. Castello di Serravalle - 40053 Volamoggia (BO) - ITALY
+39 051 6705141 - +39 051 6705156 - info@enfocert.it - www.enfocert.it

EURO CERT

CERTIFICATE

EUROCERT certifies that the company:

KING-SHUEN-YI TECHNOLOGY CO., LTD.
No.197-13, Sanshe, Xinshe Dist., Tainan City 744, Taiwan (R.O.C.)

Implements management system that conforms to the requirements of the standard

EN ISO 9001:2008

for the following scope:

MANUFACTURE AND SALES OF INDUSTRIAL VALVES.

Certificate Number: 128TWQS

Issue Date: 05/03/2013
Current Certification Date: 11/05/2017
This Certificate is valid till: 26/05/2018

For the Certification Body,

IOANNIS KARAYANNIS
General Manager

The validity of this certificate is subject to annual surveillance.
Please check the validity of the certificate from our website using the personal access EUCERCM.
List of holders of the certificate is available in the contact for TCF 02-0208. Any holder this certificate holds.

SYD IAF
EN Certification
Cert. No. 3

89, Othios & Lykourinos str., 14652, Metamorfosi - Greece
T +30 210 62 50 495, 30 210 62 53 927, F +30 210 62 03 018, en.eurocert@eurocert.gr
www.eurocert.gr



金順億科技有限公司 順億配管材料

- 總公司：台南市新市區(北)三舍里197之13號
- TEL:(06)5011603 · 5890321 · FAX:(06)5012267
- 台中分公司：台中市大雅區通山路14-1號
- TEL:(04)25607989 · FAX:(04)25607776
- 新竹分公司：新竹縣竹北市新溪街159之2號
- TEL:(03)5528665 · FAX:(03)5528786
- 網址：www.kingshuenyi.com